

# KAPUCINO



Kabar Seputar Cerita Inspiratif SCOPI



Gedung KOPI, R.P. Soeroso St. No. 20  
Cikini, Menteng, Central Jakarta 10330  
[info@scopi.or.id](mailto:info@scopi.or.id) | [www.scopi.or.id](http://www.scopi.or.id)



VOL.14 | DEC 2024

# TABLE OF CONTENT

Panel Discussion: A Restorative Economy for Mitigating Climate Change through Sustainable Business Solutions	02	New Master Trainer, New Spirit	10
Agenda of I.C.O. /Global Coffee Public Private Taskforce (CPPTF) - Meeting with Competent and Control Authorities of the EU Member States - Responsible for enforcement of the EUDR	04	Celebrating International Coffee Day 2024: Enhancing Coffee Collaboration in Indonesia	12
SCOPI x Bapeltan Lampung: Progressive Steps in the Development of Coffee Extension Quality	06	SCOPI Members' Meeting 2024	14
Master Trainer National Meeting & Upgrading: Multi-Stakeholder Collaboration to Produce Competent Coffee Master Trainers	07	GCP Virtual Members Assembly	18
		Members' Corner: Coffee Farmers Training, Now and in the Future	20





World Tourism Day 2024

Documentation: KEM and Eco-Tourism Bali

## Panel Discussion: A Restorative Economy for Mitigating Climate Change through Sustainable Business Solutions

SCOPI (Sustainable Coffee Platform Indonesia) served as a panelist during the commemoration of World Tourism Day 2024, organized by Eco Tourism Bali and the Koalisi Ekonomi Membumi (KEM) on Friday, September 27th, 2024. The event was held at Potato Head Village in Seminyak, Bali, providing a significant platform to address solutions to the challenges confronting the tourism sector, particularly those impacted by climate change.

Tourism, recognized as one of the most dynamic sectors, plays a pivotal role in the Indonesian economy by significantly contributing to the national GDP, generating employment opportunities, and fostering cultural exchange. However, this sector is also highly susceptible to the tangible effects of climate change. Consequently, the theme for World Tourism Day 2024 emphasizes the importance of identifying sustainable solutions that can alleviate the detrimental impacts of climate change while offering insights into innovative practices that can empower both businesses and the broader community.



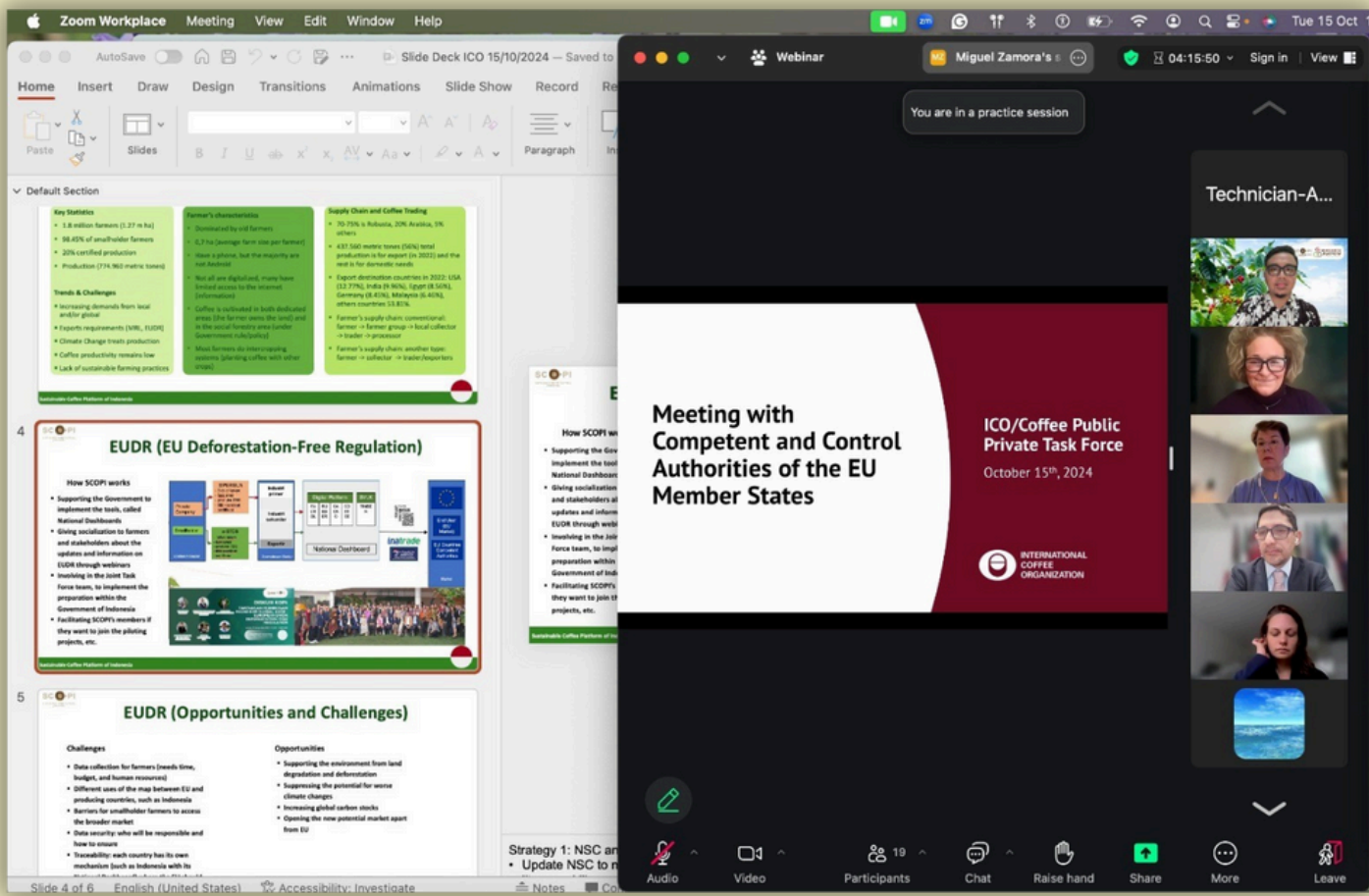
Documentation: KEM and Eco Tourism Bali

In the panel discussion titled "Restorative Economy to Address Climate Change through Sustainable Business Solutions," SCOPI was represented by its Program Coordinator, Mahmud Rifai. Alongside other panelists, including Irma Chantily from Konstelasi Accelerator and Dennis Yonasa from Palapa Drinks, Mahmud Rifai presented on the topic of "Adaptation to Climate Change for Ecotourism Commodities and Businesses through Targeted Interventions."

The topics presented by SCOPI emphasized the platform's optimization of its role in bolstering the resilience of Indonesia's ecotourism sector, particularly by enhancing the resilience of coffee farmers. As a vital component of the ecotourism industry, coffee farmers are frequently among those most impacted by climate change. Consequently, SCOPI aims to intensify its interventions by developing and implementing solutions that assist coffee farmers in navigating climate challenges, thereby also fostering the growth of ecotourism enterprises in Indonesia.

SCOPI's involvement in this event underscores its dedication to advancing initiatives aimed at fostering more sustainable and environmentally responsible tourism. Through collaboration among diverse stakeholders, including the business sector, society, and government, it is anticipated that the Indonesian tourism industry can evolve more resiliently, delivering enhanced benefits to all parties involved.





Documentation: SCOPI

## Agenda of I.C.O. /Global Coffee Public Private Taskforce (CPPTF) - Meeting with Competent and Control Authorities of the EU Member States - Responsible for enforcement of the EUDR

CPPTF - TECHNICAL WORKING STREAM 3: Policies and Institutions of Coffee Importing Countries

**Pemaparan topik:** Particularities of the value chain and EUDR compliance for a sample of coffee Producing Countries – oleh SCOPI

SCOPI (Sustainable Coffee Platform of Indonesia) participated in the ICO (International Coffee Organization) agenda entitled "Global Coffee Public Private Taskforce (CPPTF) - Meeting with Competent and Control Authorities of the EU Member States - Responsible for enforcement of the EUDR" which was held on October 15th, 2024. Represented by its Program Coordinator, Mahmud Rifai, SCOPI took part by delivering a presentation on "Particularities of the value chain and EUDR compliance for a sample of coffee Producing Countries - Indonesia." SCOPI's involvement in this strategic agenda reflects its commitment to supporting the sustainability of the Indonesian coffee industry in the global market, especially amidst the challenges of European Union regulations related to the European Union Deforestation Regulation (EUDR).

SCOPI's presentation began by introducing the organization to international stakeholders. SCOPI, as a national platform that prioritizes the sustainability of the coffee sector, has a mission to improve sustainable coffee cultivation practices, empower coffee farmers, and support a transparent and equitable supply chain. With members consisting of key stakeholders (such as companies, exporters, NGOs, and farmer cooperatives), and working partners, including government (both local and national), research and/or consulting institutions, and universities, SCOPI acts as a liaison that facilitates dialogue and collaboration in the coffee industry.

Then, SCOPI explained the characteristics of Indonesian coffee and the industry. Indonesia, as one of the largest coffee producers in the world, has a wealth of coffee varieties that grow in various unique ecosystems, such as Gayo Arabica in Aceh, Toraja Arabica in Sulawesi, and Robusta in Lampung. With this diversity, Indonesian coffee has long been known in the international market as a premium product with a distinctive taste. However, Indonesia's coffee supply chain also faces complex challenges, ranging from relatively low levels of farmer productivity and limited logistics infrastructure to a lack of access to global markets for small farmers.

SCOPI also highlights its strategic role in supporting Indonesia's compliance with the EUDR. This regulation aims to prevent deforestation related to agricultural commodities, including coffee, which are exported to the European Union. In this context, SCOPI has played an active role through various initiatives. First, SCOPI is involved as one of the technical committees representing the coffee commodity on the joint task force under the coordination of the Indonesian Coordinating Minister for Economic Affairs.

Second, through SCOPI's function as an enabler and convener, SCOPI plays a role in disseminating information and outreach about EUDR policies to members, partners, farmers, and extension workers (master trainers) through an online discussion agenda called DisCo (discussion about coffee). Third, SCOPI encourages and encourages members to be involved in piloting the implementation and development of the National Dashboard, a tool developed by the government to manage/organize data related to important commodities in Indonesia, including those that will be affected by the EUDR policy, which one of them is coffee.

In its presentation, SCOPI also identified several opportunities and challenges faced by Indonesia regarding EUDR. On the one hand, this regulation provides an opportunity for Indonesian coffee to increase its competitiveness in the European Union market through the implementation of higher sustainability standards. On the other hand, challenges faced include additional costs to meet regulatory requirements, especially for small farmers, as well as the need to strengthen technical and institutional capacity to support certification and tracking processes.

To wrap up, SCOPI emphasized its commitment to continue supporting the transformation of the Indonesian coffee sector towards better sustainability. SCOPI invites stakeholders, both local and global, to strengthen collaboration, and support Indonesia's efforts to fulfill EUDR requirements without ignoring aspects of social justice and the welfare of small coffee farmers. With active involvement in international forums like this, SCOPI hopes to contribute to the creation of a more inclusive and sustainable coffee ecosystem.



## SCOPI x Bapeltan Lampung

# Progressive Steps in the Development of Coffee Extension Quality

Sustainable Coffee Platform of Indonesia (SCOPI) and the Agricultural Training Center (Bapeltan) of Lampung have recently signed a Memorandum of Understanding (MoU) regarding training for coffee extension workers, known as the Training of Trainer (ToT). The focus of this training is to enhance skills in the cultivation and post-harvest processes of Robusta coffee by applying a national curriculum based on Good Agricultural Practices (GAP) and sustainable coffee training guidelines.

This MoU, which was finalized on October 28th, 2024, aims to organize training for prospective Master Trainers (MT) as part of the Master Trainer National Meeting (MTNM) & Upgrading for Robusta Coffee activities in 2024. The goal of this training is to produce Master Trainers who are more skilled in managing coffee plants and post-harvest processes in a more environmentally friendly, efficient, and productive manner.

Through the implementation of the National Sustainable Curriculum (NSC), this training also aims to support the welfare of coffee farmers in Indonesia. By prioritizing sustainable agricultural practices, this program is expected to not only improve the quality of coffee production but also provide positive impacts on environmental conservation and the well-being of coffee farmers in the future.

As part of its commitment, Bapeltan Lampung will issue certificates to ToT participants who have successfully completed the training. These certificates serve as proof that the participants have acquired the necessary knowledge and skills.



## Master Trainer National Meeting & Upgrading 2024

# Multi-Stakeholder Collaboration to Produce Competent Coffee Master Trainers

Documentation:SCOPI

Coffee Master Trainer Upgrade (MUG) Program: The Indonesia Coffee Export Development initiative represents a strategic collaboration between SCOPI and the International Islamic Trade Finance Corporation (ITFC). This program aims to enhance the capacity and expertise of Master Trainers (MT) to promote sustainable coffee cultivation and post-harvest practices among farmers. In 2024, the MUG program will conduct an upgrading session for MT as part of a series of Master Trainer National Meetings (MTNM) & Upgrading activities.

The activity took place in Karo, North Sumatra, from October 10th to 12th, 2024, for MT Arabica, a beneficiary of the MUG Program. In contrast, the activities for MT Robusta were conducted from October 28th to November 1st, 2024, in Tanggamus, Lampung, in collaboration with GIZ and Nestlé through the SASCI+/Coffee++ program.

Key objectives of the implementation of MTNM & Upgrading 2024 activities include the recruitment of new MTs, the dissemination of innovative knowledge and strategies, the enhancement of MT knowledge and skills, and the execution of the certification process for coffee farmer and instructor competencies in alignment with the Indonesian National Work Competency Standards (SKKNI). This program will enable MTs to obtain official professional certificates from the National Professional Certification Agency (BNSP).

This certification serves as an official acknowledgment that MTs have fulfilled specific national standards within their area of expertise. It also guarantees the sustainability of the coffee farmer mentoring program while maintaining a high quality of training for farmers.





## Arabica Series

## Robusta Series

SCOPI, ITFC

**Organizer**

SCOPI, ITFC, GIZ, Nestlé

Karo, North Sumatra

**Location**

Tanggamus, Lampung

10th-12th October 2024

**Date**

28th October - 1st November 2024

- Training of Trainers (ToT) Training Methodology
- Coffee Cultivator Competency Certification
- Instructor/Trainer Competency Certification

**Series of Events**

- Training of Trainers (ToT) in Coffee Cultivation and Post-Harvest Practices
- Training of Trainers (ToT) Training Methodology
- Coffee Cultivator Competency Certification
- Instructor/Trainer Competency Certification

17 Participants

**Number of attendees**

- 32 Participants of ToT Coffee Cultivation and Post-Harvest
- 35 Participants of ToT Training Methodology
- 21 Participants of Coffee Cultivation Competency Certification
- 20 Participants of Instructor/Trainer Competency Certification



Documentation: SCOPI

## Produce New MT Through ToT Coffee Cultivation and Post-Harvest

The Training of Trainers (ToT) program for Coffee Cultivation and Post-Harvest was conducted to develop new Master Trainers (MTs) from field staff and new SCOPI partners. Initially, this initiative was also intended for the MTNM and Upgrading Arabica series; however, due to insufficient registrants to meet the quota, it was exclusively implemented for the Robusta series.

The Training of Trainers (ToT) on Robusta Coffee Cultivation and Post-Harvest featured SCOPI Grand Master Trainers as speakers, including Dr. Ir. Retno Hulupi, SU., Bambang Haryanto, SP., M.Sc., and Ir. Cahya Ismayadi, M.Sc. This program provided participants with knowledge and insights pertaining to coffee cultivation and post-harvest processing, aligned with the National Sustainable Coffee Curriculum (NSC). In addition to theoretical instruction, the ToT also incorporated a practical session at a coffee plantation, enabling participants to apply the theoretical concepts while enhancing their technical skills.

## ToT Training Methodology: Pre-Session Briefing for Serkom Instructors

The Training of Trainers (ToT) on Training Methodology is designed to enhance the knowledge and skills of Master Trainers in delivering training aligned with the SKKNI, or the Indonesian National Work Competency Standards. This initiative is essential as a prerequisite for the certification of instructor/trainer competencies.

## Multi-Party Cooperation

The success of the MTNM & Upgrading 2024 event is undoubtedly the result of collaboration and cooperation among various parties involved, including donors such as ITFC, GIZ, Nestlé and Tokopedia, as well as SCOPI members who participated by sending their representatives as event participants, including Rainforest Alliance, PT Berindo Jaya, Olam (ofi), and Rikolto. This collaboration demonstrates a shared commitment to supporting the development of the coffee sector in Indonesia through training focused on sustainable farming practices and the improvement of human resource quality in the coffee industry.



# NEW MT, NEW SPIRIT!

The 2024 Master Trainer & Upgrading (MTNM) Program has successfully produced new Master Trainers who will enhance the future of Indonesian coffee. Let us introduce SCOPI's new Master Trainers!

## MT Arabica



**Mukti Hakim**

Yayasan Leuser International



**Amada**

KSU Rahmat Kinara,  
Aceh Tengah



**Thomas Upping**

KSU Petani Kopi Toraja,  
Toraja Utara



**Istiqamah**

Koperasi Usaha Tani Gayo,  
Aceh Tengah



**Budiman Sembiring**

Champion Farmers, Karo



**I Wayan Kerana**

PT. IndoCafco/Ecom Coffee  
Group



**Triyono**

Koperasi Koerintji Barokah  
Bersama, Kerinci



**Martin Tarigan**

Champion Farmers, Karo



**Albar**

PPL Distan Aceh Tengah



**Jeffriyadi Gurusinga**

PT. Olam



**Yasir Arpan**

Champion Farmers, Aceh  
Tengah



**Windi Manullang**

Polbangan Medan

# MT Robusta



**Erdiansyah**  
BPSIP Lampung



**Ade Cholik Mutaqin**  
Coffee Learning Center Sulteng



**Joni Putrawan**  
Coffee Learning Center Sulteng



**Hafiz Luthfi**  
Polinela Lampung



**Rusmanto**  
KUB Sinar Agung (Nestle),  
Tanggamus



**Arif Fitria Susatya**  
KUB Sinar Agung (Nestle),  
Tanggamus



**Nur Mukhlis**  
Probutsta, Tanggamus



**Gagat Surya Adi N.**  
Rikolto Indonesia



**Sigit Wicaksono**  
KUB Mawar (Nestle),  
Tanggamus



**Henky Fernando**  
KUB Bintang Jaya (Nestle),  
Tanggamus



**Budi Intani**  
KUB Bintang Jaya (Nestle),  
Tanggamus



**Muldan Soni**  
KUB Bintang Jaya (Nestle),  
Tanggamus



**Krisna Yusuf**  
BPP Ulu Belu, Tanggamus



**Nugroho**  
BPP Ulu Belu, Tanggamus



**Supen Peri**  
Dinas TPHP Kab. Lahat





Documentation: SCOPI

## Celebrating International Coffee Day 2024: Enhancing Coffee Collaboration in Indonesia

On October 22, 2024, SCOPI (Sustainable Coffee Platform of Indonesia), NTFP-EP Indonesia, and PARARA hosted an event to commemorate the International Coffee Day 2024, themed "Strengthening Coffee Collaboration in Indonesia." The gathering, held in Jakarta, sought to unite government representatives, the private sector, farmers, and civil society to address emerging challenges in the coffee industry, including sustainability and traceability.

### Engaging Network of Activities

This event features a series of engaging activities designed to disseminate knowledge and experience within the realm of coffee. It commences with a presentation by a resource person who is an expert in the field, and it has invited several notable figures, including:

- Eman W. Putra, Secretary of the SCOPI Board of Directors, addressed the significance of the challenges and opportunities faced by small farmers and retail traders in relation to Indonesian coffee.
- Diah Y. Suradiredja, from the National Secretariat Team of the Sustainable Commodity Information and Data Dashboard, presented the national dashboard framework as a foundational strategy for coffee commodities.
- Prayudi Syamsuri, Director of Plantation Product Processing and Marketing at the Directorate General of Plantations, Ministry of Agriculture of the Republic of Indonesia, addressed the measures implemented by the Indonesian government to fulfill global market demands.

### Enjoyable Cupping

In this activity, an engaging cupping session was conducted, inviting participants to sample a variety of coffees from different coffee-producing regions in Indonesia. Led by Daroe Handojo from Noozkav Kopi Indonesia, the session aimed to showcase the quality and flavor profiles of diverse Indonesian coffees. Furthermore, this activity offered participants hands-on experience in the proper techniques for evaluating coffee.



Documentation: SCOPI





Documentation: SCOPI

### Talk Show “Sustainable Coffee Practices”

The centerpiece of this activity was a talk show session entitled "Sustainable Coffee Practices: Diverse Approaches to Enhancing the Livelihoods of Sustainable Smallholder Coffee Farmers." This session was moderated by Veronica Herlina, a member of the SCOPI Advisory Board and the founder of Saka Dala Enterprise, and featured several speakers with expertise in the realm of coffee sustainability, including:

- Afifa Urfani of Pandawa Agri Indonesia, who addressed sustainable production.
- Erwin Novianto from Fairtrade NAPP shared his insights on fair trade models designed to enhance the welfare of coffee farmers.
- Gusti Laksamana from AKSI/SCAI, who showcased a range of sustainable coffee initiatives within the downstream sector.
- Eko Purnomowidi of the Klasik Beans Cooperative emphasized the significance of establishing a traceability system to assist small-scale coffee farmers in enhancing the market value of their products.

The discussion highlighted several best practices for promoting sustainable coffee production, including enhancing coffee quality, employing environmentally friendly technologies, and initiatives aimed at improving the welfare of small coffee farmers. The diverse perspectives shared by the speakers offered invaluable insights for all stakeholders in the Indonesian coffee industry.

### Collaboration for the Sustainability of Indonesian Coffee

This event represents a significant opportunity to enhance collaboration among all coffee stakeholders in Indonesia. Coffee farmers, business entities, and government representatives each play a vital role in fostering a more sustainable coffee industry that positively impacts the welfare of coffee farmers. Through discussions and partnerships of this nature, it is anticipated that the future of Indonesian coffee will be more promising, characterized by not only exceptional quality but also sustainability that supports small farmers and upholds environmental integrity.





Documentation: SCOPI

## SCOPI Members Meeting 2024: Fostering Collaboration and Innovation for the Future of Indonesian Coffee

On November 29, 2024, the Sustainable Coffee Platform of Indonesia (SCOPI) convened a Member Meeting at the Akmani Hotel in Jakarta. This event was attended by SCOPI members both in person and online through the Zoom Meeting platform. In addition to current members, prospective SCOPI members and partners were also invited to participate.



### Collaborative Cupping Experience

This activity commenced with a cupping session in collaboration with SCOPI members, specifically Beragam Kopi Indonesia and the Indonesia Coffee Academy. The coffee utilized in this session is sourced from farmers nurtured by SCOPI Master Trainers (MT).



Indonesia Coffee  
Academy

The event was formally inaugurated by Prof. Dr. Bayu Krisnamurthi, a member of the SCOPI Advisory Board. In his opening remarks, Prof. Bayu emphasized the necessity for increased focus on the entire coffee value chain, from upstream to downstream, in order to foster a sustainable industry.

"In our engagement with the government, it is essential to align with the focus of their initiatives. For instance, we can leverage the concept of downstreaming that is presently being advocated. However, we must also emphasize to the government that the coffee sector has already undergone considerable downstreaming. Consequently, more effective downstreaming efforts should be complemented by the fortification of the upstream sector (upstreaming)," articulated Prof. Bayu.



# MEMBERS' Meeting 2024



“To maximize its impact, SCOPI must enhance its network and foster collaboration with diverse stakeholders. Successfully executed case studies by SCOPI serve as tangible evidence of its capabilities and expertise, thereby attracting the interest of potential collaborators.”

**Prof. Dr. Bayu Krisnamurthi**  
SCOPI Advisory Board

Documentation: SCOPI



## Presentation of the SCOPI Program and Action Plan for 2023-2030



Documentation: SCOPI

Following the official inauguration of the event, the proceedings advanced with a presentation detailing various programs that have been and will be executed by SCOPI. A key highlight is the SCOPI Joint Action Plan (2023-2030), which encompasses a range of strategic initiatives aimed at bolstering the Indonesian coffee sector, including measures to enhance the welfare of coffee farmers and fortify the standing of Indonesian coffee in the global marketplace.

## Talk Show and Plenary Session



Documentation: SCOPI

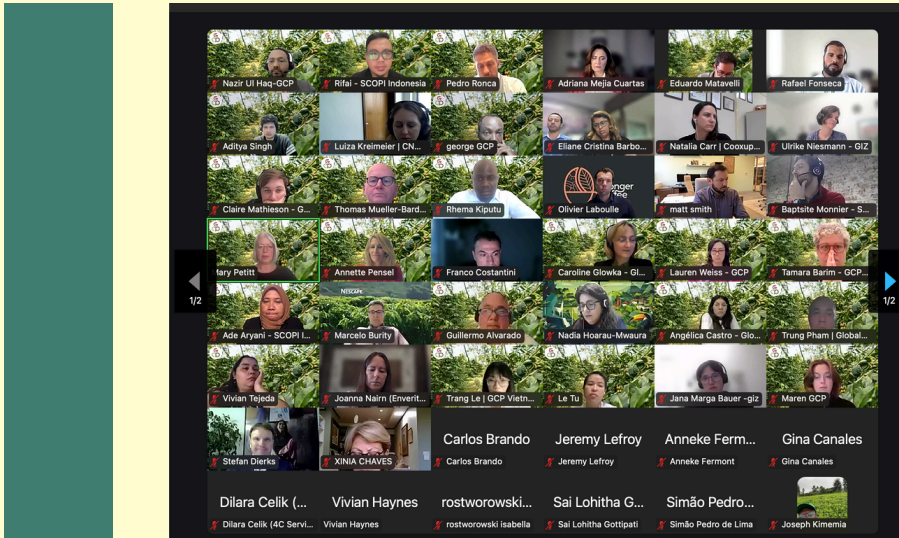
In the talk show session, SCOPI invited two prominent speakers to discuss contemporary issues within the coffee industry. Felia Salim from Indonesia Eximbank, CLUA, and Oliver Wyman addressed the opportunities and challenges encountered by stakeholders in the coffee sector regarding access to financing and financial opportunities that can facilitate sustainable coffee development in Indonesia. Concurrently, Nina Rossiana from Rainforest Alliance elaborated on global market challenges, including the EUDR (European Union Deforestation Regulation), and how sustainable coffee certification programs can assist coffee industry participants in maintaining competitiveness in the global market.

The event proceeded with a plenary session featuring Jakup Ginting, Head of the Refreshing Plant Substance Team at the Directorate General of Plantations, Ministry of Agriculture of the Republic of Indonesia. He presented on "Future Condition & Policy" concerning coffee commodities from a governmental perspective. Jakup offered significant insights into the policies that will influence the advancement of the Indonesian coffee industry in the coming years.





# GCP VIRTUAL MEMBERS ASSEMBLY



Documentation: SCOPI

On December 5th, 2024, the Global Coffee Platform (GCP) successfully held the GCP Virtual Members Meeting, an annual forum for all GCP members from various countries, conducted virtually. This meeting is an important moment to reflect on achievements, establish new strategies, and strengthen collaboration towards the sustainability of the global coffee sector. This agenda also marks GCP's concrete steps in realizing its vision for the transformation of the coffee sector for the farmer's prosperity and long-term sustainability.

The agenda began with the introduction of new members for 2024, consisting of several organizations from several countries in the world. The presence of these new members reflects the increasingly strong global commitment to GCP's mission to improve sustainability throughout the coffee supply chain. The new members are expected to enrich the collaboration network and contribute to GCP's strategic initiatives at the local and global levels.

Next, the report on 2024 achievement was one of the main parts of the agenda. The report covered significant progress on the topic of "Towards Sustainable Sourcing," a collective effort to ensure the sustainability of coffee resources through a transparent and accountable approach. In addition, the topic of "Collective Action Plans for Farmer Prosperity" was also highlighted, focusing on programs aimed at improving the coffee farmer's prosperity, including training in sustainable agricultural practices and access to fairer markets. This session also included feedback from various GCP committees and working groups, as well as the presentation of budget plans for 2024 and 2025 from the GCP financial manager. This provides transparency to members regarding the allocation of GCP resources to support future strategic initiatives.



Documentation: SCOPI

The next part of the meeting was the “Member's Q&A” session, where members had the opportunity to ask questions and provide input on GCP's programs and strategies. The interactive discussion reflected the spirit of openness and collaboration that is at the heart of GCP. The agenda then moved on to points of agreement, including the report of the GCP Board and information related to the completion of several members of the GCP executive board. Members also expressed their full support for GCP's strategy to be executed in 2025 through active member engagement in collective action at the local and global levels. Additionally, the Endorsement of minutes of the 8th GCP Membership Assembly 2023, marks the continuation of the organization's strategic journey.

As the final part of the agenda, the meeting also included the presentation of the results of the election of the new GCP Board. With fresh leadership, GCP is optimistic that it can continue its mission with greater strength. Other than that, The Outlook for 2025 was also presented by Adriana Mejía, Chair of the GCP Executive Board, who outlined the strategic vision for the year ahead. The main focus is on strengthening collective action and expanding the impact of sustainability initiatives around the world.



Documentation: SCOPI

Then, “Breakout sessions” provide an opportunity for members to exchange experiences on Regenerative Agriculture practices for coffee. The discussion highlights the importance of agricultural approaches that can restore ecosystems while increasing farmer productivity. In this session, members are divided and assigned into several groups, including producer groups, Company/Roaster groups, NGO/CSO groups, and groups for other member categories. In this session, members were asked to determine priorities for topics related to regenerative agriculture, which is currently being developed by GCP.

In conclusion, the GCP 2024 Virtual Members Meeting is an important milestone in the journey towards transforming the global coffee sector. With renewed commitment from members and a clear strategic direction, GCP is determined to create a more inclusive, sustainable, and competitive coffee ecosystem. This forum also serves as an invitation for all stakeholders to continue to collaborate in facing future challenges and opportunities for the welfare of coffee farmers around the world.





Documentation: PT. Berindo Jaya

South Sumatra and Lampung provinces are the largest producers of Robusta coffee in Indonesia (Badan Pusat Statistik, 2023). PT Berindo Jaya comes with a mission to promote sustainable coffee farming through various support programs and training for coffee farmers in its areas of operation. The aim is to improve the welfare of coffee farmers by changing their mindset towards coffee cultivation practices and enhancing coffee productivity. PT Berindo Jaya also implements coffee product certification programs through the Common Code Coffee Community (4C) and the NKG Verified program for responsible supply chains.

## Coffee Farmers Training, Now and in the Future

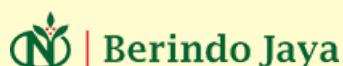
Contributor: Sustainability Department,  
PT Berindo Jaya



Documentation: PT. Berindo Jaya

PT Berindo Jaya began conducting training and support activities for the coffee farmer supply chain in 2020 and continues to do so to this day. Training for coffee farmers involved in the sustainable and responsible coffee supply chain is carried out through farmer groups and individual training sessions. The practices adopted by coffee farmers are generally still based on conventional methods. Currently, PT Berindo Jaya's mission is to provide accurate information to its partner farmers in order to implement proper and correct coffee cultivation practices, as well as good harvesting and post-harvest practices.

## Members' Corner



The impact of this training is highly noticeable in the change of coffee farmers' cultivation practices. Economically, farmers have started to experience an increase in income. By implementing more efficient and environmentally friendly techniques, coffee yields have improved. One of the training programs conducted by the PT Berindo Jaya team is the intercropping system, which involves planting other crops between coffee trees, such as chili, banana, and pepper.



Documentation: PT. Berindo Jaya

In terms of social aspects, the coffee farmer training has also brought positive changes. Coffee farmers, who previously worked individually, have started forming farmer groups to share knowledge and experiences with each other. They have become more active in discussions and in helping one another address issues in the fields, such as pest and disease control, as well as efforts to cope with climate change. This has strengthened social bonds among farmers, fostering a sense of togetherness and support in facing challenges together.

The training also has a significant impact on the environment aspect. In general, farmers are starting to reduce the use of chemical fertilizers and manage their farms sustainably. Farmers have become more concerned with the preservation of nature. Environmentally friendly farm management helps maintain soil fertility and reduces negative environmental impacts. In addition, the agricultural techniques taught also help farmers adapt to climate change, such as frequent extreme weather events.

The hope of coffee farmers is that this training can continue to grow and reach more farmers across Indonesia, especially all partner farmers of PT Berindo Jaya. They hope that PT Berindo Jaya can continue to provide support in managing coffee farms in a more environmentally friendly way and improving the well-being of coffee farmers. With ongoing training, coffee farmers are optimistic about facing the challenges of climate change and increasing their income.







# KAPUCINO



**SCOPI**  
SUSTAINABLE COFFEE PLATFORM  
of INDONESIA

**Gedung KOPI, R.P. Soeroso Street No. 20  
Cikini, Menteng, Central Jakarta 10330**

 [scopi.or.id](http://scopi.or.id)

 [info@scopi.or.id](mailto:info@scopi.or.id)

 [@scopi\\_id](https://www.instagram.com/scopi_id)

  SUSTAINABLE COFFEE PLATFORM OF INDONESIA