

KAPUCINO

Kabar Seputar Cerita Inspiratif SCOPI

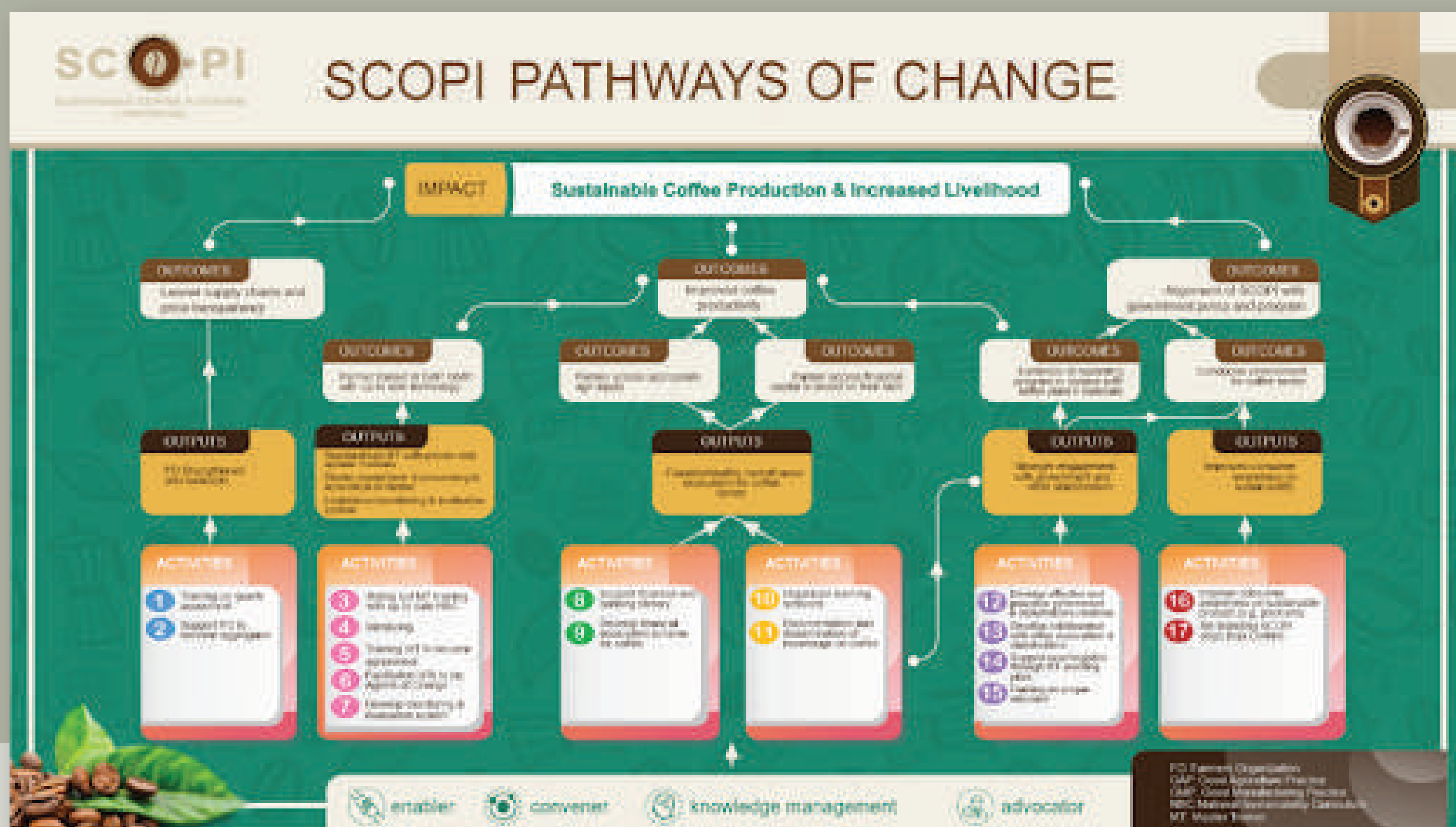
Highlight

Indonesia Sustainable Coffee Roadmap Workshop

by Annasytassy Nurul Hidayati

As a follow-up to the National Sustainable Coffee Stakeholders (NSCS) Meeting 2021 and the Baseline Coffee Code Webinar, SCOPI held a series of “Indonesia Sustainable Coffee Roadmap Workshop” (ISCRW). Through this activity, it is expected that stakeholders in the coffee supply chain in Indonesia, especially members, Master Trainers, and SCOPI partners can provide inputs related to

The ISCRW was held virtually for 3 (three) days on August 10, 12, and 13, 2021. **On the first day, Tuesday, August 10, 2021**, the participants had the opportunity to review SCOPI’s Theory of Change. They can give their opinions, advice, and suggestions on sections that need to be revised or adapted to the relevance of the current coffee sector challenges and the aspirations of SCOPI members and partners. There will



several sustainable coffee criteria in Indonesia that have been established at the time of the 2021 NSCS Meeting event (which include: **(i) eco-friendly, (ii) agroforestry, (iii) productivity and (iv) climate**), SCOPI’s Theory of Change, and how sustainable coffee criteria in Indonesia can be associated with Coffee Sustainability Reference Code (CSRC) document by Global Coffee Platform (GCP) document that becomes a reference at the global level.

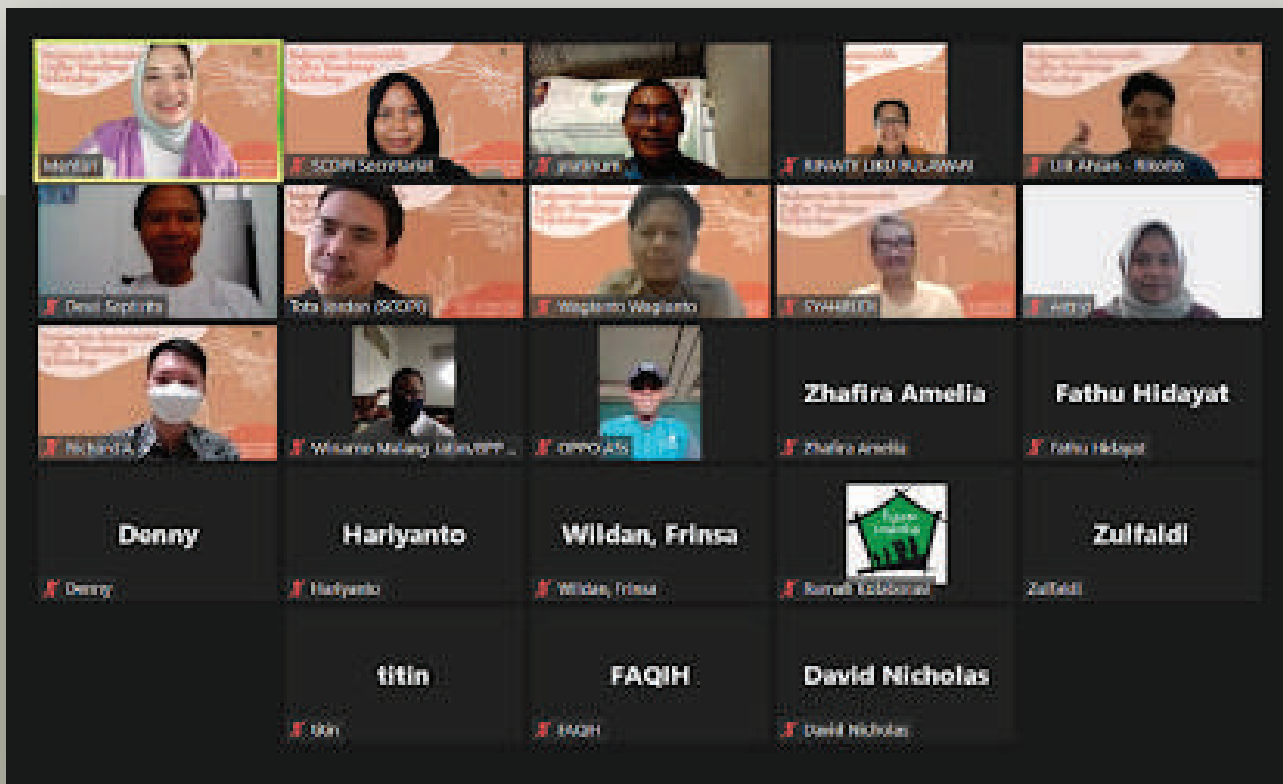
be a link between SCOPI’s Theory of Change and the 4 (four) sustainable coffee criteria from NSCS Meeting results as well as the Coffee Sustainability Reference Code (CSRC) document.

There were several points concluded from the first day of ISCRW regarding the SCOPI’s Theory of Change. There are some points to maintain such as price transparency, strengthening farmer organizations, and shortened supply chains.

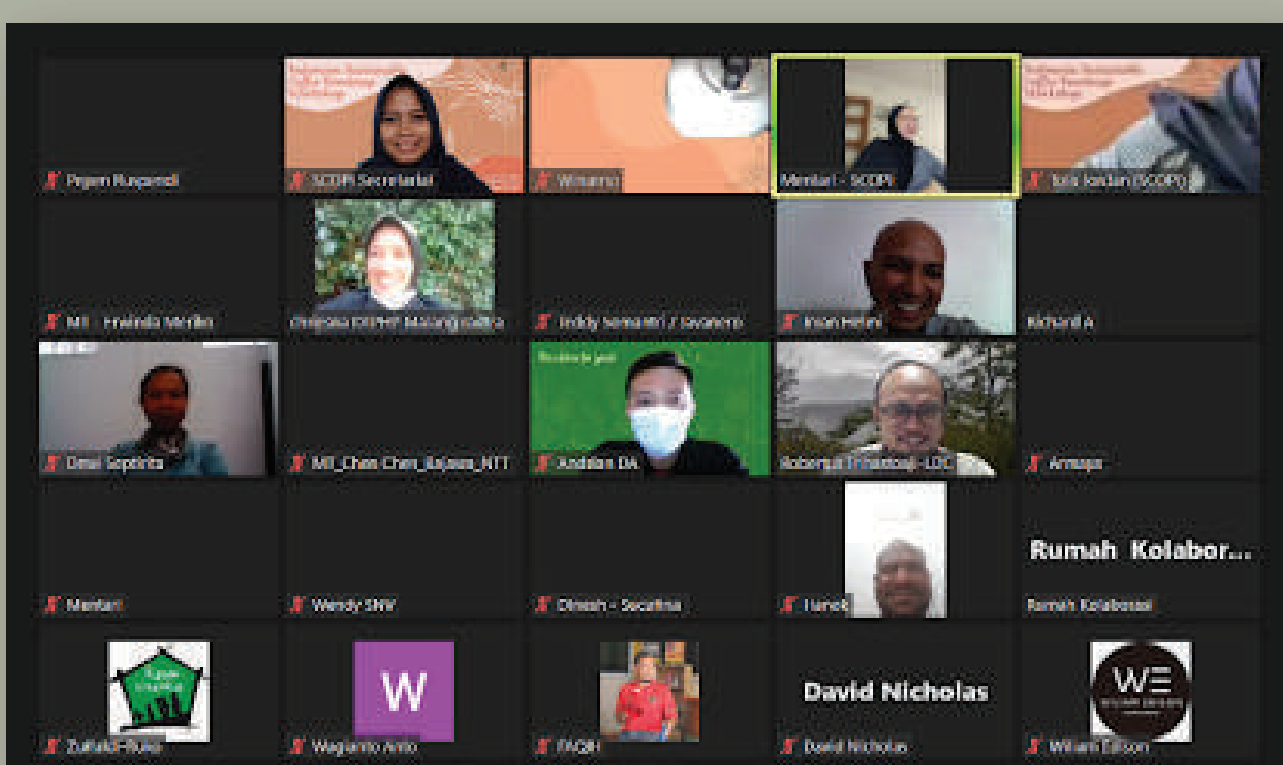
In the series of activities on the second and third days of ISCRW, participants were actively involved in discussions on the four topics resulting from the 2021 NSCS Meeting. Participants attended discussion meetings with their chosen topics during registration. Each topic discusses the form of roles, concrete contributions of members and/or partners and the proposed location of the joint program of each criterion/Working Group referred.

As a conclusion from the Climate topic, it was proposed that the Climate module should be developed in the format of books and videos that are easy to understand. The module contains topics related to climate-appropriate cultivation techniques, the choice of climate-resistant varieties, how to increase plant immunity, plant management, fertilization, and using a living income approach. The modules for Arabica and Robusta coffee types are distinguished. In addition, farmers' capacity building for climate change mitigation and adaptation is carried out by mapping farmers' knowledge related to climate change. In this Working Group, SCOPI can collaborate with BMKG, the Government, GIZ, and members such as

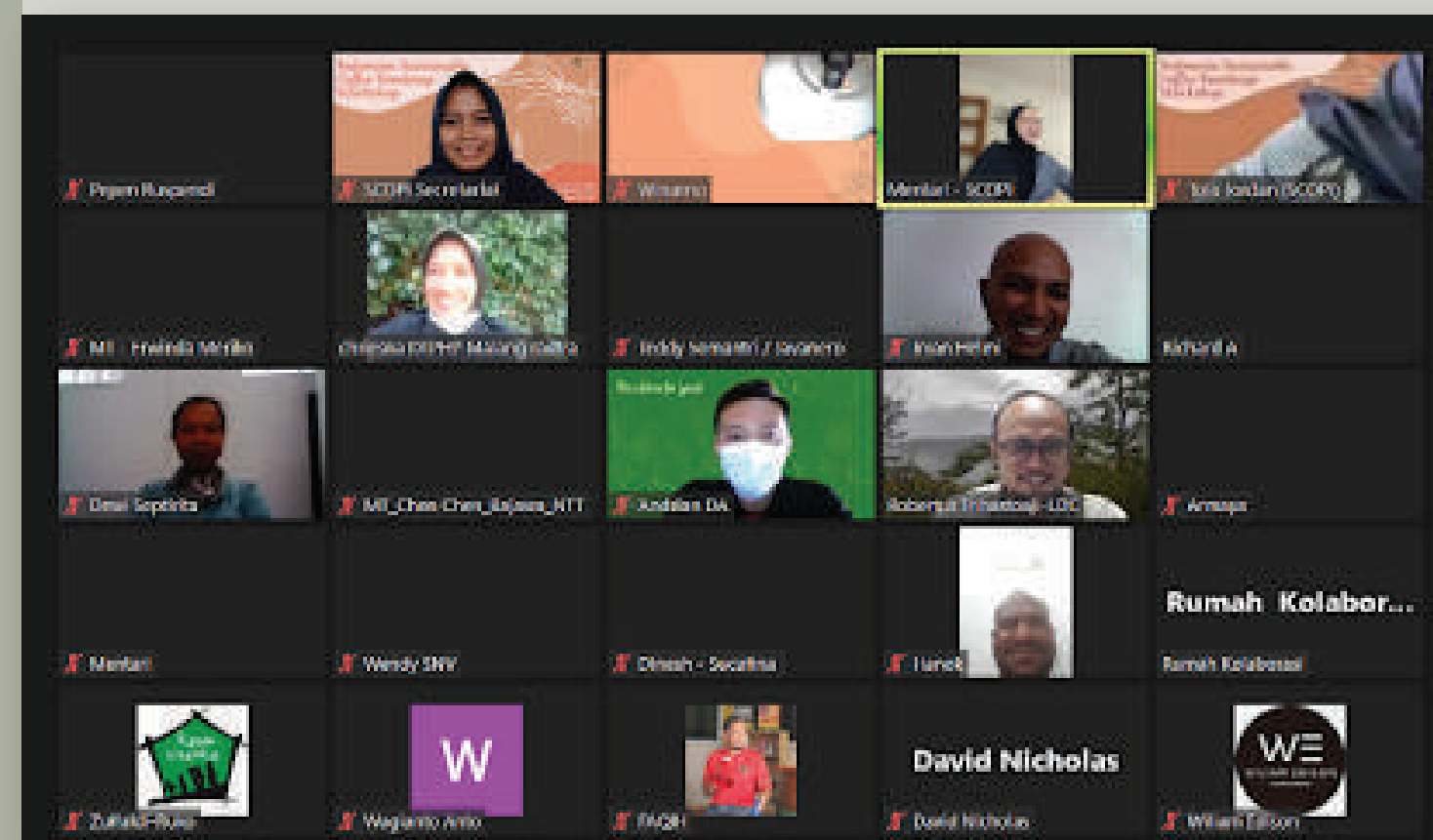
Fairtrade, WCS, Nestle, Rikolto, Ruko, HRNS for the preparation and renewal of modules that are in accordance with the current climate situation and conditions in Indonesia. The proposed locations are Central Aceh, Bener Meriah, Central Java, NTT, Sulawesi, Malang, Lampung, Flores, and South OKU.



On the third day, Friday, August 13, 2021, the topics of **Productivity** and **Environmental Friendly (Eco-Friendly)** were discussed. The Productivity topic discussed the tools and parameters needed for monitoring the condition of plants, starting from young plants to those that are already fruiting. One of the tools that farmers can use is ODK (Open Data Kit). Farm management related to garden classification, garden analysis, pruning, and integrated model planning are needed to increase the farmers' productivity. According to the participants, it is necessary to update the NSC and GAP as well as further training with segmentation such as High-Level GAP & GEP Training Guidelines, Basic Training for New Farmers, Post Training Survey, Farmer Segmentation, and so on. The increase in farmer productivity must coincide with increasing market access, increasing price value, and profitability, it is necessary to analyze market segmentation and use local market share. Short-term programs that can be implemented are workshops on low productivity and socialization of the change from mono-cropping to inter-cropping systems.



The last topic discussed was Environmentally Friendly (Eco-Friendly). Programs that can be implemented are socializing related to the use of prohibited chemicals in Indonesia, reducing the use of chemical fertilizers, encouraging the manufacture of organic fertilizers from available materials, knowledge about pests and diseases, sanitation, and garden hygiene. Regarding the topics, it is also necessary to pay attention to the coffee waste chain and waste management. In this case, the role of each company is needed to help outreach to farmers. Efforts to support environmentally friendly programs can be in the form of integrated farming practices with livestock, diversification, and agroforestry, not using single-use packaging, and commercializing biopesticides. The most important thing is that there is a price difference in the market between environmentally friendly (organic) and non-environmentally friendly (non-organic) coffee. SCOPI can create measurable standards for eco-friendly coffee plantation activities and add discussions related to environmental friendliness in the NSC book that is adapted to the situation and conditions of each plantation area.



The follow-up to this activity is the formation of Working Groups based on the interests of each Member. The results of this activity will be discussed further with the SCOPI Board. Furthermore, it will be a reference in the preparation of the document **"Roadmap to Sustainable Coffee in Indonesia"**.

Editor-in-Chief's Notes

“Optimism is the faith that leads to achievement. Nothing can be done without hope & confidence.” – Helen Keller.

Greetings, #CoffeeWarriors! We certainly hope that all KAPUCINO readers are in good health, mentally & physically. The past few months is not easy for #CoffeeWarriors. For weeks, the Delta variance of the COVID virus had spread out and as a response to it, the Government emphasized the “PPKM” regulations. Surely this had affected business, office, communities activities and so on.

Some of the activities which had been planned by SCOPI with its partners must be post-poned until the situation becomes better. Indeed, SCOPI shall support the regulation. Moreover, we encourage #CoffeeWarriors to follow the regulations and continue to be aware of the situation for the common good. We are also encouraged by the increase in the number of people who have received the first and second vaccines within those period.

Thank you to the Almighty that under such limitations, SCOPI had successfully implemented several activities safely and sound from August to September 2021, which include: the Indonesia Sustainable Coffee Roadmap Workshop, Bali Sustainable Coffee Forum for Disaster Recovery 2021, Training for Young Coffee Entrepreneurs for Bali Province, and Global Coffee Platform Strategy Workshop. All of them were conducted virtually or hybrid (virtually & physically). This edition of KAPUCINO covers some of those activities. Additionally, there are some profiles of new SCOPI members in 2021. Check them out in the respective segment!

Let's continue to share optimism and positive spirit through actions to support #sustainablecoffee!

Warm regards,

Paramita Mentari Kesuma

Kapucino Team



**Paramita
Mentari Kesuma**

Editor in Chief & Writer /
Executive Director



**David Nicholas
Franztius**

Writer & Editor /
Intern



**Annasytassya
Nurul Hidayati**

Writer / Administrative
Support



**Tota Jordan
Sitanggang**

Writer / Intern



Ega Prass

Layout Designer

Table of Contents

Highlight:

1 Indonesia Sustainable Coffee Roadmap Workshop

Bali Sustainable Coffee Forum for Disaster Recovery 2021:

5 Disaster Recovery Management in Bali Province
Through Strengthening the Coffee Sector

SCOPI Activity:

7 Training of Young Entrepreneurs in
the Coffee Sector in Bali Province

8 SCOPI Members Profile

9 KAPUCINO Quiz

Bali Sustainable Coffee Forum for Disaster Recovery 2021: Disaster Recovery Management in Bali Province Through Strengthening the Coffee Sector

by David Nicholas Franztius

On September 3rd, 2021, SCOPI with the support from SIAP SIAGA and in cooperation with Bali Provincial Government and National Disaster Recovery Agency (BNPB) had held the Bali Disaster Recovery Coffee Platform Forum for Disaster Recovery 2021. In that occasion, the actors in the coffee sector in Bali Province had been gathered to discuss the concept and implementation of value & supply chain for economic recovery from the coffee sector. This forum was attended by representatives from the BNPB, the Bali Provincial Government, SCOPI members, coffee farmers, coffee shop owners, roasters, and academics. The forum was held in an offline setting located at the Balangan Room, Hotel Grand Inna Kuta and virtually using Zoom application.

Strategy of BNPB, and Chairman of the SIAP SIAGA Program Steering Committee, Mr. Fitriani Ardiansyah as a Member of the SCOPI Supervisory Board and Chairman of the Green Trade Initiative Foundation (YIDH), Ir. Ketut Lihadnyana, M.M.A as Head of the Bali Provincial Agriculture and Food Security Office who represented the Secretary of Bali Province, as well as moderated by the Executive Director of SCOPI, Ms. Paramita Mentari Kesuma. There are several speakers who also presented virtually in the Panel Discussion Session, including Mr. Irvan Helmi from PT. Anomali Coffee, Mr. I Gusti Mangkurupa from MPIG Arabika Kintamani, and Drs. Anak Agung Ngurah Agung Satrya D, M.H as Head of MSME Empowerment, and Cooperative and MSME Office of Bali Province.

The subject of discussion at this activity are the main concept of Disaster Recovery Management to Increase the Resilience of Bali Province to Pandemic-Related and Disasters Impact Through Strengthening the Coffee Sector. The topic of disaster recovery that focuses on the coffee sector was initially initiated by the BNPB due to the coffee association with the Subak Abian system in the Bali Province which is closely attached to Balinese community traditions, hence

The activity had been conducted by implementing health protocols, conducting antigen swab tests before the event, as well as requiring participants to use masks and to maintain social distancing. This event was attended by 16 people who attended physically and by 40 people virtually (online) through Zoom media. The forum was officially opened by Dr. Raditya Jati who served as Deputy for Systems &





are many new benefits and insights for SCOPI Members, SCOPI Partners and the Bali Provincial Government. Farmers can also have better understand what buyers need, and the programs that will be undertaken for disaster breeding in Bali, such as improving consistency in the quality or taste of coffee and quantity so as to increase living income for farmers. Through this series of events, SCOPI hopes to be able to build and build good relationships and understand

supporting environment conservation, mitigation risks of landslides and flood disaster, as well as improving livelihood for the local community's economy.. In addition, Indonesia is also the fourth largest coffee producer in the world with an estimated coffee production of 760,963 tons in 2019. SCOPI had also signed a Memorandum of Understanding with the Provincial Government of Bali to assist and traing coffee farmers based on the National Sustainability Curriculum (NSC) on good agriculture practices for Arabica and Robusta coffee cultivation and post-harvest techniques.

In the next session, the Workshop Session was facilitated by Ms. Nonie Kaban from RIKOLTO had raised 3 topics, which are the recommendations for collaboration work plans in Bali Province, location recommendations for collaborative activities, and forms of support from each party interested in engaging in Bali Disaster Recovery Coffee Platform. This workshop resulted in the conclusion that the importance of access for farmers related to inputs, planting materials, finance, and capacity building to be able to maintain and improve the quality and quantity of coffee assets of Bali Province is financial and the amount of planting land for Arabica Coffee and Robusta Coffee. Furthermore, a list of recommendations for collaborative activities, activity locations and form of support from each participant had been gathered, which are hoped to be followed up in the future.

In this activity, discussions were also held between the Provincial Government and coffee farmers from MPIG Arabika Kintamani. By knowing the conditions in the field, there



each other's needs between parties on the upstream and downstream sides of the coffee supply chain. In near future, we hope that this forum can be followed up through a virtual meeting.

SCOPI Activity: Training of Young Entrepreneurs in the Coffee Sector in Bali Province

by Tota Jordan Sitanggang

“It is important for young entrepreneurs to be adequately self-aware to know what they do not know.” - Mark Zuckerberg.



The increasingly open market for Bali’s coffee commodities both at the national and international levels creates an opportunity for the Balinese to develop business in the coffee sector. Currently, along with the opening of the coffee market, the commodity of Bali coffee is also gaining popularity. Cafes or coffee shops that offer coffee originating from Bali can be found in various places ranging from tourist attractions, rural areas, to urban areas.

The increasing of business opportunities in the coffee sector must be accompanied by adequate knowledge and skills from entrepreneurs related to the field they are involved in. Moving on from this situation, SCOPI in collaboration with the Indonesia Coffee Academy held Young Entrepreneur Training in the Coffee Sector from 6th until 9th September, 2021 at Kopi Gunung Catur, Kintamani, Bali. After previously successfully collaborating in organizing Young Entrepreneur Training in the Coffee Sector in Lampung.

The training activity which was held for four days was attended by 30 participants by following the health protocol standards set by the government. All participants were given theories related to cupping, manual brewing, and latte art. In addition to providing theory, participants also get hands-on practice sessions where they can apply the theory they previously learned directly.

The rapid development of the coffee industry must be accompanied by contributions that are in accordance with the concept of sustainability from the



younger generation, both in the upstream and downstream sectors. Because the future of coffee is in the hands of the next generation. As many as 87% of the participants of the Young Entrepreneurs Training in the Coffee Sector are young people aged 15-25 years. Most of them are the second generation of coffee plantation entrepreneurs in Bali Province. It is unfortunate that there were only 2 female participants in this training. From this training, it is hoped that more young people will be interested in further contributing to the coffee industry in Bali, both in the downstream and upstream sectors. SCOPI hopes to attract the interest of the younger generation to be involved in the sustainable coffee sector.

SCOPI Members Profile

by David Nicholas Franztius & Tota Jordan Sitanggang



BERAGAM

PT Berangan Ragam Rasa (Beragam) was established on January 13, 2020 and is a business unit of PT Makna Angan Karya Andanu (MAKA). BERAGAM started from the roasting unit of TUKU Coffee Shop and along with the increasing need to continue to increase production capacity, Management began to chestnut for something bigger. Management feels the need to invest to be able to play more roles and work on behalf of BERAGAM which is not only a roastery but can provide coffee business solutions that are relevant and in accordance with the times.

BERAGAM try to keep serving relevant products by continuously innovating to answer the changing market needs by also involving the role of MSMEs to meet the needs of the surrounding market.

In the coffee industry, BERAGAM acts as a downstream that creates demand, has a vision and mission to always collaborate, exchange ideas with all industry players upstream in order to keep the coffee ecosystem sustainable.

In July 2020, Nur Jamila joined PT. Berangan Ragam Rasa. Although only as a part-time staff in the purchasing division, Mrs. Nur very interested in studying the coffee industry, including the adjustments that must be done in the pandemic period. Currently, she is trusted to fill the position of Project & Internal Quality Manager. My contribution led PT. Berangan Ragam Rasa to become one of the company who have competence, successfully achieve and implement Food Safety and GMP (ISO 22000), as well as in the process for Halal certification.



"Further exploring the coffee industry that finally made me fall in love with the taste of coffee itself, which initially drank coffee only forced and the final choice in the afternoon, until finally it became an obligation to drink coffee every day". Not only the taste, Mrs. Jamila also interested to know more about the ecosystem that exists in this commodity. Traveling with SCOPI in one of the agenda activities in NTT, opened her eyes to the richness of the archipelago and the diversity of local coffee and many things in this industry that need to be maintained and harmonized to stay sustainable.



UD. Maju Mandiri is located in Bayade Hamlet, Dulamayo Village, Gorontalo Regency. UD Maju Mandiri has many types of products from "Kopi Dulamayo" with green bean, roasted bean, and sachet to increase productivity because of the growing demand for the coffee market and open new jobs for farmers.

UD. Maju Mandiri has a vision to become an integrated business and have a positive impact on the welfare of the community and the environment, and also has a mission to motivate coffee farmers to increase the quantity and quality of coffee production, empower coffee farmers in supporting sustainable business activities, make coffee as one of

the superior products typical of Gorontalo Regency, play an active role in creating jobs, creating natural ecosystems and environmental sustainability.



Zainal Monoarfa is one of the local potential-based business activists in Gorontalo with the aim of "building an independent business for the common good". Tertarik to develop a business in Dulamayo, one of the administrative areas of Telaga District and Telaga Biru Gorontalo Regency because this area has good access and close to Gorontalo city. In addition to road access support, the Dulamayo region also has a good natural panorama at the top of its pine forest. In 2016, Mconducted a small amount of research with his children's mother (Rusni Podungge) to dig local potential and wisdom of the community in Dulamayo.

KAPUCINO QUIZ

G	T	A	A	H	B	V	U	U	M	S	G	A	L	A
P	D	U	N	R	E	D	N	M	O	U	P	L	G	T
N	I	Y	B	H	A	T	R	X	Z	S	F	V	H	S
B	B	V	G	S	U	B	C	L	Z	T	O	F	T	I
B	H	D	F	S	H	A	I	X	L	A	S	W	N	R
F	B	I	F	K	I	Y	L	C	E	I	E	S	F	A
C	A	F	E	I	N	X	O	X	A	N	E	I	I	B
P	E	S	A	C	Z	S	I	C	J	A	L	S	S	I
G	C	Y	C	T	S	I	I	F	Q	B	K	F	O	F
D	O	Z	G	E	S	Y	V	U	K	I	D	N	M	S
D	A	Q	R	S	M	U	H	Q	N	L	J	L	P	W
J	R	P	H	P	A	L	B	M	S	I	G	I	M	Z
F	S	N	Q	W	T	Q	B	O	J	T	D	W	A	E
E	X	X	G	D	M	J	R	U	R	Y	M	R	J	X
Y	A	R	O	I	R	R	A	W	E	E	F	F	O	C

Hello #CoffeeWarriors! Let's find 8 (eight) words about coffee from the random letters above. These words can be found diagonally or vertically, Are you ready to accept this challenge? 😊