

KAPUCINO



Kabar Seputar Cerita Inspiratif SCOPI



Gedung KOPI, R.P. Soeroso Street No. 20
Cikini, Menteng, Central Jakarta 10330
info@scopi.or.id | www.scopi.or.id



VOL.13 | SEPT 2024

TABLE OF CONTENT

Connecting Two Coffee Worlds: Learning Exchange Indonesia and India	02	GCP Action Week 2024	09
SCOPI Holds Coffee Discussion (DISKO) to Discuss Preparation for EUDR Policy Implementation 2025	05	#MTActive: Budiman Sembiring's Remarkable Achievements at the Karo Agricultural Event 2024	16
Collaboration between SCOPI, Tokopedia, and ShopTokopedia: Promoting the Advancement of Robusta Coffee in Lahat	07	360° Video of Sustainable Coffee Practices & Post-harvest SCOPI X ITFC	17
		Members' Corner: Collaboration for the Future of Gayo Coffee	18

Connecting Two Coffee Worlds: Learning Exchange Indonesia and India

Contributor: Tia Ameylia



Documentation: SCOPI

Visit of the Indian Delegation: Dialogue and Knowledge Exchange for Sustainable Coffee

Sustainable Coffee Platform of Indonesia (SCOPI) participated in the India-U.S. Triangular Development Partnership (TriDeP) program by The Asia Foundation and USAID. One of the program's agendas was a “Learning Exchange” meeting with members of the Indian Delegation. The event, held on June 12, 2024, in Jakarta, was also attended by several SCOPI members, including Klasik Beans Cooperative and MAKA Group: Kopi Tuku and Beragam. The purpose of the delegation’s visit was to promote the exchange of information, knowledge, expertise, and experiences between experts and practitioners from India and Indonesia regarding the environmental and economic value of agroforestry in coffee-growing areas, as well as to foster an understanding of how to effectively manage agroforestry to contribute to rural livelihoods.

On this occasion, SCOPI provided an explanation of its role as a sustainable coffee platform in Indonesia. SCOPI also outlined the track record and journey of sustainable coffee in Indonesia, based on SCOPI’s activities nationally. In addition, there was an information-sharing session by SCOPI members, namely Klasik Beans Cooperative and MAKA Group: Kopi Tuku and Beragam, regarding the implementation of sustainable coffee practices.

Upstream, coffee farmers are the main actors in production. Klasik Beans Cooperative explained the agroforestry practices they have implemented in collaboration with various parties in the upstream coffee ecosystem. Meanwhile, MAKA Group also shared their experience in applying sustainable coffee practices from upstream to downstream, through Beragam, which processes coffee beans from farmers into products marketed by Kopi Tuku.

A Q&A and information-sharing session was then conducted to learn about the coffee conditions in each country. This discussion provided valuable insights into sustainable practices that could potentially be adapted in Indonesia, as well as how the two countries can learn from each other.

As a follow-up to this meeting, discussions were held on the next series of programs for a reciprocal visit to India. This visit aims to deepen the understanding of coffee agroforestry practices implemented in India and to build stronger networks between coffee stakeholders in both countries.



Documentation: SCOPI

Reciprocal Visit: Innovations in Coffee Agroforestry in India

After the visit of the Indian Delegation to Jakarta on June 12, 2024, it is now time for the Indonesian Delegation to make a reciprocal visit to India. This visit, which is part of a Learning Exchange, will take place from July 28 to August 6, 2024, focusing on coffee agroforestry innovation.

The Indonesian Delegation consists of 22 participants, including representatives from the government, companies, research institutions, universities, farmers, and associations. On this occasion, SCOPI has the honor of sending three representatives: Ilham Bayu Widagdo from the SCOPI Secretariat, along with two SCOPI members, Eko Purnomowidi from the Klasik Beans Cooperative and Teddy Kusumah Somantri from SOMA Coffee - Javanero Indonesia.

This visit aims to enhance the capacity of experts and practitioners in understanding the environmental and economic benefits of agroforestry. During ten days, the SCOPI delegation visited several regions in India, including Bangalore, Chikkamagaluru, and Coorg. There, they learned about coffee agroforestry practices and shared experiences with experts and industry players in the field.

The delegation also had the opportunity to visit the headquarters of the Coffee Board of India, as well as the research station and branch of the Coffee Board in Chikkamagaluru and Coorg, Karnataka. This experience provided a chance to observe coffee agroforestry practices firsthand and learn from farmers, associations, universities, and downstream business actors.

With the new insights gained, SCOPI is now developing an action plan focused on two main areas. First, strengthening organizational governance as a multi-stakeholder coffee association. Second, promoting the implementation of agroforestry programs in Indonesia.

Through this visit, SCOPI hopes to bring home knowledge and best practices that can be applied in Indonesia, for the development of a more sustainable and productive coffee sector. This visit not only strengthens inter-country relations but also opens opportunities for further collaboration in the field of coffee agroforestry in the future.

“The products of agroforestry are not just shade trees and intercrops that can increase profits, but the most important product of agroforestry is the people who practice it. People who think and act every day to preserve nature are essential capital for the sustainability of the earth’s ecosystem.”

Dr. C.G. Kushalappa

a third-generation farmer and former Dean of the College of Forestry in Ponnampet, Kodagu



Documentation: SCOPI

A visit to Sargod Coffee Curing Works, one of the coffee processing facilities located in India, specifically in the Karnataka region. This facility focuses on the curing process, which involves processing coffee beans after they are harvested to prepare them for the market.





Contributor: Mahmud Rifai

Sustainable Coffee Platform of Indonesia (SCOPI) held a DISKO (Coffee Discussion) event titled **'Towards the Implementation of EUDR 2025: The Role of Coffee Commodity Stakeholders in the Application of the National Dashboard, e-STDB, and Other Preparatory Steps.'** This event was conducted online on June 14, 2024, and was attended by more than 150 participants from various regions in Indonesia, including business actors and stakeholders in the coffee commodity sector, as well as Indonesian students studying abroad.

This event invited Dr. Prayudi Syamsuri, SP., M.Si., the Director of Processing and Marketing of Plantation Products from the Ministry of Agriculture of the Republic of Indonesia, as the first speaker, and Martinus Haryo Sutejo, ST., M.Sc., CSRC, CSRA, CSP, as the second speaker, who serves as the Senior Vice President of Sustainability, Project Management Unit Sustainability Division at PT. Surveyor Indonesia.

The event began with a speech by the Executive Director of SCOPI, Ade Aryani. The activity was then followed by an opening remark from Dr. Ir. Musdalifah Machmud, M.T., who serves as the Expert Staff in the Field of Connectivity, Service Development, and Natural Resources at the Coordinating Ministry for Economic Affairs of the Republic of Indonesia, and is also a member of the SCOPI Advisory Board for the 2024-2027 period.

EUDR Policy: Challenges into Opportunities

In her opening remark, Dr. Musdalifah emphasized the importance of validating that coffee plantations in Indonesia are deforestation-free areas. She also stressed that the EUDR policy presents a challenge that can be transformed into an opportunity through dedication, hard work, and cooperation from all parties.

The session of material presentation by the speakers was moderated by Puji Sumedi Hanggarawati. She is the Program Manager for Agricultural Ecosystems at the Indonesian Biodiversity Foundation (KEHATI) and also serves as the treasurer of the SCOPI Board of Directors for the 2024-2027 period.

Accelerating the Implementation of e-STDB as Indonesia Prepares for EUDR 2025

The first presentation was delivered by Dr. Prayudi Syamsuri, SP., M.Si., regarding 'The Implementation of the National Dashboard System and the Acceleration of STDB for Farmers,' focusing on the importance of accelerating the data collection of farmers through STDB (Surat Tanda Daftar Budidaya). The acceleration of STDB implementation is a crucial factor in preparing Indonesia to face the EUDR regulations in 2025. The existing electronic version of STDB is a system designed to manage information related to plantations and farming digitally.

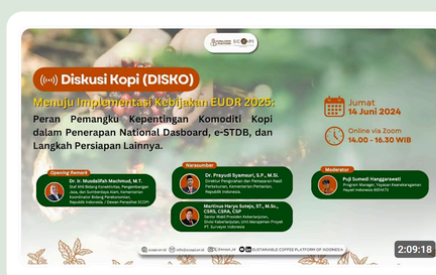
The implementation of e-STDB is very important in the context of the EUDR policy as it can assist in several areas, including: 1) efficient data management, 2) product traceability, and 3) support for certification. Furthermore, Dr. Prayudi outlined the targets and procedures for filling out and issuing e-STDB to ensure that all business actors and stakeholders in the coffee commodity sector are educated and aware of the importance of accelerating its implementation.

National Dashboard Indonesia: Enhancing Transparency and Accountability for Export Certification Compliant with International Standards

The second speaker, Martinus Haryo Sutejo, ST., M.Sc., CSRC, CSRA, CSP, who is more commonly known as Nata, presented a presentation titled 'National Dashboard Indonesia for Sustainable Commodities.' The National Dashboard is an application developed to integrate data and information related to environmental sustainability from various sectors. This dashboard is important for several reasons, such as 1) monitoring and reporting, 2) transparency and accountability, and 3) alignment with international standards.

With this tool, Indonesia can demonstrate its ability and commitment to comply with international standards as set by the EUDR. This will facilitate the verification and certification process for products intended for export to the European Union. In his presentation, Nata explained the background of the EUDR regulation and the global market, as well as the regulations that underpin the creation of the National Dashboard. Additionally, detailed steps regarding the operational aspects of this tool were thoroughly explained to provide a comprehensive understanding for the participants.

Watch the Full Video!



DISKO: Menuju Implementasi Kebijakan EUDR 2025

172 views • 3 months ago

Sustainable Coffee Platform of Indonesia

Uni Eropa akan menerapkan kebijakan European Union Deforestation Regulation (EUDR) pada tahun 2025 untuk mengurangi ...



Documentation: SCOPI

Collaboration between SCOPI, Tokopedia, and ShopTokopedia: Promoting the Advancement of Robusta Coffee in Lahat

Contributor: Tia Ameylia

Training 1,000 Coffee Farmers in Lahat

The Sustainable Coffee Platform of Indonesia (SCOPI) collaborated with the Lahat District Plantation Office, Tokopedia, and ShopTokopedia to conduct a socialization event for post-harvest coffee management training and quality improvement of coffee beans. This event took place on Monday, June 24, 2024, at Hungrypedia Lahat, South Sumatra, attended by various stakeholders, including the Head of the Lahat District Plantation Office, representatives from SCOPI, and farmer groups from across Lahat District.

The purpose of this socialization is to explain the training that will be conducted for 1,000 coffee farmers in Lahat District during the June-July 2024 period. The training materials, presented by SCOPI Master Trainers (MT) Destiawaty Kartika and M. Syahrissa, focus on post-harvest management and quality improvement of coffee beans.

Additionally, the teams from Tokopedia and ShopTokopedia provided education to the farmers on effective ways to sell online on their platforms. This is crucial, given the increasing number of consumers shifting to Indonesian Robusta coffee, especially due to the scarcity of Vietnamese coffee caused by climate change.

Valuable Opportunity for Robusta Coffee

Ilham Bayu Widagdo, a representative of SCOPI, emphasized the importance of responding to this change in consumer preferences.

'We must maintain buyer satisfaction, as they are now shifting to Indonesian Robusta, so they can place repeat orders,' he stated. To achieve this goal, it is crucial to maintain the quality of Robusta green beans in accordance with good post-harvest standards.

This training program is a concrete step by SCOPI to improve the quality of Robusta coffee in Lahat District, in collaboration with the Plantation Office and fully supported by Tokopedia and ShopTokopedia as donors for the event.



Documentation: SCOPI

Invite Journalists for a Coffee Farm Tour

Not only that, SCOPI, Tokopedia, and ShopTokopedia also invited national and local media to experience coffee harvesting firsthand during an event held on Thursday, July 25, 2024. This activity was part of a Media Briefing attended by journalists from 16 media outlets, discussing collaboration in post-harvest training for coffee farmers.

The event included a talk show session followed by a tour of a local farmer's coffee plantation. Led by Master Trainers Destiaway Kartika and M. Syahriza, journalists were invited to learn about coffee cultivation in accordance with the National Sustainable Coffee Curriculum (NSC) and practice coffee picking in the fields.

The collaboration between SCOPI, the Plantation Office, Tokopedia, and ShopTokopedia not only provides training for coffee farmers but also opens new opportunities for the Robusta coffee industry in Lahat. With strong support, it is hoped that coffee farmers can improve the quality of their products, optimize sales, and ensure sustainability in the future.





Documentation: GCP

GCP Action Week 2024

Contributor: Mahmud Rifai

GCP Country Congress

GCP Country Congress was carried out on June 24, 2024, and took place at Nieuwe Liefde, Da Costakade 102, 1053 WP Amsterdam. This event was part of the GCP Board meeting, where all GCP board members, GCP Country Platform managers, Country Platform representatives, and some of the GCP global secretariat are involved.

This agenda has some objectives, including:

- Ensure alignment in understanding GCP's 2030 goal and strategy, GCP Collective Action, and the value add of the Country Platforms
- Foster deeper cooperation and stronger ties between the governance of the Country Platforms and GCP's Board to support the resourcing and implementation of the Collective Action Plans for Farmer Prosperity, as part of GCP's broader 2030 strategy.

In participating in this agenda, SCOPI was represented by the Country Platform Managers (SCOPI Executive Director) and Country Platform Representatives (SCOPI Executive Board's Chairman). During the agenda, the Country Platform managers (SCOPI Executive Director) have a role in presenting the platform, during rotating small group discussions with different GCP Board Members and Platform Representatives.

The group discussions consisted of 1 Platform Representative and 3 GCP Board Members, discussing about:

1. How can the GCP and country platform strengthen working together to accelerate GCP Collective Action?
2. How can GCP Board Members and Platform Reps help unlock the potential of the platforms and GCP Collective Action? (TA, resource mobilization, etc.)
3. What are the remaining challenges to discuss for accelerating GCP Collective Action?

This may include:

- How does GCP Collective Action work complement supply chain initiatives?
- Roles of different actors in the supply chain in GCP Collective Action?

The rest of the agenda was a free-flow discussion between participants, and for the country platform including Indonesia (SCOPI), the discussion was among the convening/policy work, NSC, Collective Actions Initiatives, and "pitching session" on how the Collective Action Plan will help support the goal of improving farmer's prosperity. The agenda was followed up with the dinner at Mauritskade 64, 1092 AD Amsterdam.



Documentation: GCP

GCP Member Assembly

GCP Member Assembly was held on June 25, 2024, and took place at Nieuwe Liefde, Da Costakade 102, 1053 WP Amsterdam. This event was attended by GCP Members from across the coffee value chain, GCP Board Members, Country Platform Representatives as special guests, GCP Country Staff/Platform Coordinators, and GCP Secretariat Staff. GCP Member Assembly aims to be an arena for gathering the global GCP Membership community with national and international coffee sector stakeholders and sustainability experts, offering you opportunities to learn, exchange, and create. Together, GCP and all of its stakeholders will celebrate the successes that GCP Members have achieved through collaboration and continue to strengthen the partnerships working towards accelerated collective action to achieve the shared 2030 Goal of transformational change on farmer prosperity for more than one million coffee farmers in 10 countries.

Apart from its objective, GCP Member Assembly will also highlight the:

- Learn how GCP Collective Action for Farmer Prosperity will create a measurable impact
- Participate in discussions on how these impact plans are addressing sustainability business issues
- Reconnect, exchange and meet new members and sustainability experts from around the coffee world.

In this agenda, SCOP1 was represented by its Executive Director, Program Coordinator, and its Executive Board's Chairman. All participants will have a chance to visit and engage with the country platform's reps, at a small table and poster presenting the platform and its Collective Action Plan. Participants can come and ask questions/learn more about the platform's work.

The Country Platform Managers are assigned to the following breakout groups during the Farmer Prosperity session:

Breakout Groups	Facilitator (s) & Timekeepers	Platforms	Room
GCP Collective Action	Lauren & Suzanne	BZ - Pedro UG - Samson VN - Trung	Grote Zaal/ Auditorium
Data & Claims	Caroline & Nazir	BZ - Mata KE - George	Mario
Roles	Annette & Mary	HN - Guillermo IN - Ade (SCOPI) VN - Chong Do	Kleine Zaal

As the SCOPI Executive Director is assigned to the Roles session, the Program Coordinator then attending the “GCP Collective Action” session, and the Executive Board’s Chairman went to the “Data & Claims” session. In the “GCP Collective Action” session, the important point is that GCP Members were encouraged to be involved in the activity and do it together with other members, collectively, in a way to achieve a higher and bigger impact on the beneficiaries (coffee farmers). Having more partners means an easier way to scale up the positive impact of the project. In the “Roles” session, the important thing was to define the activity clearly, for each stakeholder/actor within the collective action plan/project, so everyone would be able to synergize and complement each other. The last was the “Data & Claims” session, where GCP will generate the guidelines on how the data and claim management can be further clearer to every member/party/stakeholder who is working together in the collective action plan.



Documentation: GCP



Documentation: GCP

GIZ/IDH Living Income & Living Wage Summit

The GIZ/IDH Living Income & Living Wage Summit was conducted on June 26, 2024, and took place at Muziekgebouw aan 't IJ (1 Piet Heinkade, 1019 BR Amsterdam, the Netherlands). The participants for this summit were specialized, only for the invited Country Platform Manager and its representatives, along with other invited GCP Boards and Secretariat. At the Living Wage & Living Income Summit, The GIZ/IDH welcomed over 400 public and private sector decision-makers from producing countries and consuming countries. During the summit, participants were inspired through case examples, the transfer of knowledge and tools, and shared learning to better understand what is truly possible in this space.

Over 400 guests from more than 250 organizations from the entire supply chain joined this 2024 Living Income & Living Wage Summit. At the Summit, The GIZ/IDH tapped into the recent developments at the International Labour Organization and the upcoming EU reporting and supply chain regulations. Partners shared existing best practices and lessons learned to close the living wage and income gaps through sustainable procurement practices and collective action with unions and farming organizations.

The summit can be called a multitude of panels, deep dive sessions, and announcements of milestones on progress towards living wages and living income.

Some key moments from the day include:

- (1) Opening remarks
- (2) Facing reality – where do we stand?
- (3) Address by ILO and FAO
- (4) Inspiring actions by companies
- (5) Milestones & Innovations
- (6) Principles of inclusion in advancing living income
- (7) What's next?



Documentation: GCP

The afternoon moved us into more practical examples of companies taking action on living wage and living income. LC Packaging, Nestlé, Zeeman, and Starbucks talked through their different approaches when it comes to living income and living wage. They expressed the importance of starting with partners with whom you have a good relationship and the need to take away their fear, the importance of putting resources into the hands of farmers, and the importance of not separating social and environmental issues.

Daniel Kostzer from the International Trade Union Confederation (ITUC) highlighted the importance of defining living wages through a bottom-up approach, involving workers, governments, and employers. He mentioned that localized solutions are key. The president of the National Wages Council of Costa Rica, Eduardo Prado Zuñiga talked us through his experience from being part of an ILO Living Wage pilot program.

Annette Pensel from the Global Coffee Platform (GCP) explained how their multi-stakeholder international initiative is advancing coffee sustainability. GCP, IDH, and Solidaridad recently published research showing that current value distribution makes coffee production economically unviable for most farming families and the planet. Through the report, the organizations invite coffee companies to explore options for alternative value distribution that contributes to higher farmer income.

We heard from Sainsbury's, their supplier Fyffes, and major producer Uniban about how they work together. They spoke about building trust, making informed decisions in consultation with your supply chain, visiting the production sites to understand the producer and local context, and creating a shared understanding of what you are working toward.



Documentation: GCP

International Team Retreat

This agenda was held on June 27 and 28 at the Four Elements Hotel Bert Haanstrakade 1074, 1087 HJ Amsterdam, Netherlands. The participants were specifically for the GCP Secretariat and the Country Platform's people (manager and coordinator). The objectives of having this event were to have:

- (1) Reflections of the Country Congress and Member Assembly
- (2) Resource mobilization and execution
- (3) Comms training
- (4) Workshop on MEL (Monitoring, Evaluation, and Learning)
- (5) Team building

(1) Reflections of the Country Congress and Member Assembly

- The member assembly was held smoothly and brought together many more members (compared to last year's edition)
- Participants are looking forward to having the role, data, and claim guidelines in place, so they can further think and take action on the promoted/provided collective action plan
- The venue was great, the agenda was complete, and the shared further Action Plan was needed

(2) Resource Mobilization and Execution

- The member assembly was held smoothly and brought together many more members (compared to last year's edition)
- Participants are looking forward to having the role, data, and claim guidelines in place, so they can further think and take action on the promoted/provided collective action plan
- The venue was great, the agenda was complete, and the shared further Action Plan was needed

Documentation: GCP



(3) Coms Training

- Challenge (not enough information vs too much information)
- Focus (alignment)
- Demand (is there evidence?)
- Strategic (quantity vs quality)
- Realistic (what can we do?)
- Engagement opportunities (audience, intention, resource, know the room, keep going)
- Further intensive and regular bilateral meetings (between GCP and country platform)

(4) Workshop on MEL (Monitoring, Evaluation, and Learning)

- The fundamental (definition, purposes, function, the system, key concept)
- Attribution vs contribution (important term and its function)
- Integration between MEL and program management
- Theory of change
- Executive dashboard
- Roles and responsibilities of the GCP Global
- What's next (bilateral meeting between GCP and country platform)

(5) Team Building

- Minto Pyramid (the way we communicate something more interestingly)
- Team building games
- Photo groups



Documentation: Budiman Sembiring/MT SCOPi

#MTActive: Budiman Sembiring's Remarkable Achievements at the Karo Agricultural Event 2024

Contributor: Tia Ameylia

The Sustainable Coffee Platform of Indonesia (SCOPI) demonstrated its commitment to greening the 2024 Agricultural Fair in Karo Regency on June 27, 2024. Karo is one of the regions implementing the Master Trainer Upgrade (MUG) program, a collaboration between SCOPI and ITFC.

Amazing Achievements of Budiman Sembiring

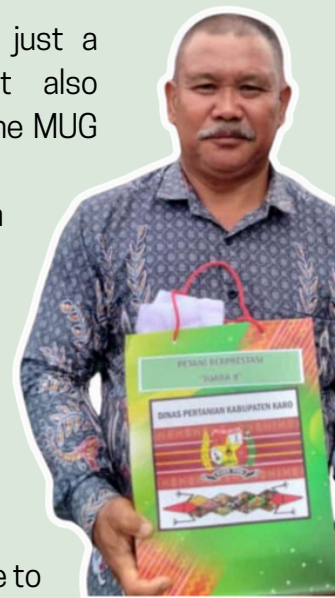
One of the highlights of the event was the achievement of Budiman Sembiring, a Master Trainer (MT) from SCOPI and a beneficiary of the MUG program, who successfully secured 2nd place as the Outstanding Farmer in Karo Regency. This award serves as tangible proof of his dedication and hard work in improving the quality of coffee in the region.

“I am very happy to have received 2nd place as the Outstanding Farmer at the 2024 Agricultural Fair in Karo Regency. This is also thanks to the activities and training provided by SCOPI for coffee farmers in Karo. My hope for the future is that SCOPI's activities can continue to bring benefits to the communities around us,” said Budiman.

Budiman's achievement is not just a personal accomplishment, but also demonstrates the success of the MUG program in enhancing the skills of the Master Trainers. This program is designed to ensure quality guidance for coffee farmers, enabling them to produce better and more sustainable products.

“With the support from SCOPI and the MUG program, we are able to expand our knowledge and techniques in agriculture. This is crucial for maintaining the quality of coffee and sustainability in our area,” added Budiman.

This achievement brings new hope to coffee farmers in Karo Regency. It is hoped that in the future, more farmers will be inspired to innovate and improve their agricultural yields. SCOPI is committed to achieving even more outstanding successes in the future, not only for the Master Trainers but also for all coffee farmers in Indonesia.



360° Video of Sustainable Coffee Practices & Post-harvest | SCOPI X ITFC

Contributor: Tia Ameylia



360° Video of Sustainable Coffee Practices & Post-harvest | SCOPI X ITFC



Sustainable Coffee Platform of Indon...
592 subscribers



The Sustainable Coffee Platform of Indonesia (SCOPI) and The International Islamic Trade Finance Corporation (ITFC) launched a 360° video highlighting the Master Trainer Upgrade Program (MUG Program), a collaborative initiative between SCOPI and ITFC. This program is designed to empower coffee farmers in Indonesia, helping them adopt environmentally friendly and sustainable coffee cultivation methods. In this 360° video, you will witness firsthand how Budiman and Alpihan, as SCOPI Master Trainers (MT), apply innovative techniques in coffee production.

This 360° video offers an immersive experience, allowing you to explore every aspect of the sustainable coffee production process. With a unique and interactive viewpoint, you can see firsthand how these practices are implemented and understand their impact in depth.

Don't miss the opportunity to see how the Master Trainers play a role in creating a better future through high-quality coffee and sustainable practices. Watch the complete 360° video to experience something you've never imagined before!



COLLABORATION FOR THE FUTURE OF GAYO COFFEE

Contributor: Beragam Kopi Indonesia

Beragam is a coffee roastery that supplies coffee beans for several coffee shops including Toko Kopi Tuku. Here in Beragam, we offer an easy and fun approach for you to focus on the best coffee business experience. Our consulting services express a high-disciplined way of work. We strive to highlight Beragam as a one-stop coffee consultant with products and services not limited only to coffee beans, but also supporting ingredients, and consulting services. Beragam and Toko Kopi Tuku are both part of the MAKKA Group.



Documentation: Beragam Kopi Indonesia

Kenawat Village, located in Lut Tawar District, Central Aceh, is renowned for its beautiful scenery and the distinctive aroma of Gayo coffee. Behind the beauty of the green hills, coffee farmers there inherit a strong tradition of coffee cultivation. However, they also face various challenges, such as pests, climate change, and limited access to modern agricultural techniques.

In response to these issues, Beragam and Adena Coffee initiated a collaboration to assist coffee farmers in Kenawat Village, focusing on environmentally friendly pest control and introducing the concept of agroforestry to preserve the surrounding forest ecosystem. This program will introduce pheromone traps to detect pests early, utilize natural biopesticides, and provide education on good agricultural practices, such as pruning and maintaining garden cleanliness.

This collaborative effort includes monitoring and early detection by introducing pheromone traps to monitor pest populations and enable timely interventions. Additionally, the program promotes the use of biopesticides, which are effective yet environmentally friendly natural pesticides. Farmers will also receive education on proper cultivation practices, such as pruning techniques, timely harvesting, and maintaining garden cleanliness. The potential of natural predators of coffee berry borer pests will also be explored as a biological control effort. Lastly, the program will introduce the planting of shade trees, such as leucaena, to maintain soil moisture and provide shade for coffee plants.

Members' Corner



Documentation: Beragam Kopi Indonesia

Brocap: Bioinsecticide Solutions for Sustainable Coffee Pest Control

With the increasing demand for sustainably produced coffee, effective and environmentally friendly pest control has become more important. One of the main solutions in this program is a bioinsecticide called 'Brocap.' Brocap harnesses the natural power of the *Beauveria bassiana* fungus, known for its ability to control various types of insect pests. This innovation offers a more eco-friendly way to combat pest threats to coffee plants while maintaining quality and sustainability in production.

Advantages of Brocap:

- Highly efficient mass trapping: **up to 10,000** coffee berry borers per trap, per day.
- Highly selective traps: **97%** of the insects captured are coffee berry borers. Commercial coffee yields increase by **10 to 16%**.
- Over several years, its cost is lower compared to traditional insecticides.

Brocap is the ideal solution for coffee farmers and industry stakeholders committed to producing high-quality coffee in a responsible and sustainable manner.

The collaboration between Beragam, Adena Coffee, and the farmers in Kenawat Village is a concrete step toward ensuring a better and more sustainable future for Gayo coffee. By focusing on environmentally friendly pest control, introducing agroforestry, and utilizing innovations like Brocap, farmers can not only maintain productivity but also protect the ecosystem in which they live. It is hoped that this program can serve as a model for other coffee-producing regions, so that Indonesian coffee continues to be recognized globally for its quality while preserving environmental sustainability.



KAPUCINO



SCOPI
SUSTAINABLE COFFEE PLATFORM
of INDONESIA

**Gedung KOPI, Jl. R.P. Soeroso No. 20
Cikini, Kec. Menteng, Jakarta Pusat 10330**

 scopi.or.id

 info@scopi.or.id

 [@scopi_id](https://www.instagram.com/scopi_id)

  SUSTAINABLE COFFEE PLATFORM OF INDONESIA