

ANNUAL REPORT 2022



SUSTAINABLE COFFEE PLATFORM
of INDONESIA



TABLE OF CONTENTS

- 01 Introduction
- 02 About SCOPI
- 03 SCOPI's Executive Board and Secretariat
- 04 SCOPI Work Area
- 05 SCOPI Work Achievements
- 06 Membership and Partnership
- 07 Donors
- 08 List of Donor, Partner and Member Logos





INTRODUCTION

TOGETHER - WE ARE STRONGER !

2022 is a year full of challenges for SCOPI. Despite the challenges posed by the pandemic, SCOPI managed its commitment to donors and partners in program implementation, particularly in Central Aceh and Karo districts through the ITFC (International Islamic Trade Finance Corporation) joint program. The program aims to have a positive impact on farmers' livelihoods as well as to increase the Development of Indonesian Coffee Exports through the MUG (Master Trainer Upgrade) Program until 2026. The program itself includes ToT (Training of Trainers) in Takengon, Central Aceh which had recruited and equipped 38 Field Trainers with the Coffee-National Sustainability Curriculum (Coffee-NSC).

SCOPI is also actively increasing multi-stakeholder knowledge through Knowledge-Sharing through Online Discussion (DISKO) activities on Climate Resilience, Agroforestry, Ecosystems Friendly Approach and Productivity and their impact on the sustainability of the coffee sector in Indonesia.

SCOPI appreciates all the support from the Government, Donors, Partners, Executive Board & Governing Board Members, Supervisory Board, Advisory Board, SCOPI Members, Field Extension Workers (Master Trainers), Experts (Grand Master Trainers) and the Secretariat Team. Collaboration and support are key factors in achieving sustainable impact and SCOPI recognizes the importance of these relationships.

Let's move forward together to have a beneficial impact on the livelihoods of coffee farmers and promote sustainable coffee production in Indonesia!

Richard Atmadja
Chairman of Executive Board
2021 - 2024

About SCOPI



The Sustainable Coffee Platform of Indonesia (SCOPI) is a non-profit organization legally incorporated in the form of an association for multi-stake holders in the coffee sector who are concerned with the development and sustainability of coffee in Indonesia, which was established on March 31, 2015.

SCOPI has a vision to promote and enhance Public-Private Partnerships in the production and trading of coffee commodities to achieve:

- Economic opportunities for farmers;
- Food security ;
- Environmental sustainability.

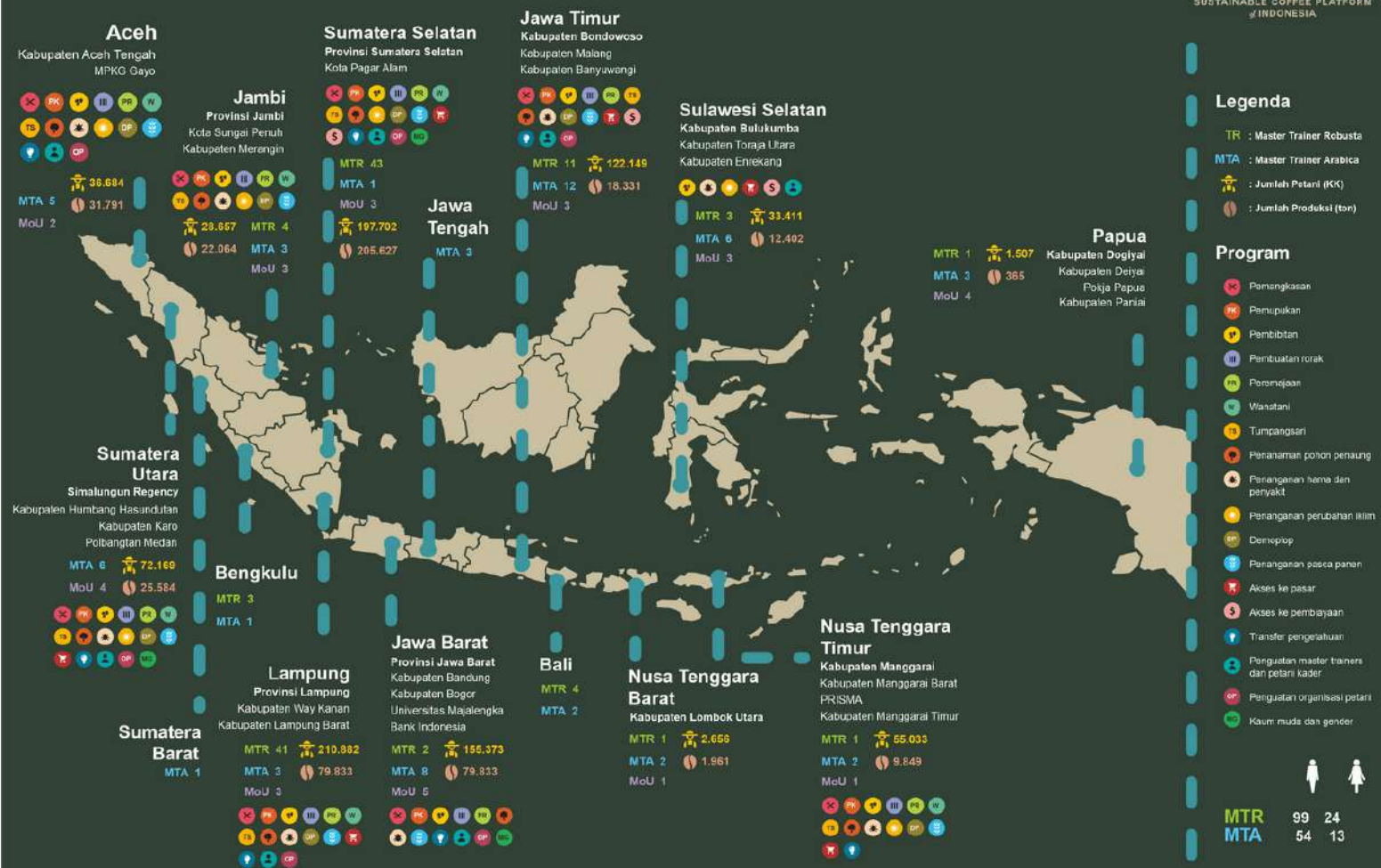
SCOPI's mission is as follows:

- Encouraging Public-Private Partnership development programs for actors in the coffee sector throughout Indonesia;

- Facilitating shared learning of best practices;
- Align all programs that mobilize coffee actors so they can work together;
- Promote collaboration between coffee associations in Indonesia.

SCOPI has principles in organizing to achieve its vision and mission, namely:

- Inclusive, participatory, democratic;
- Neutral, pre-competitive;
- Farmer centered;
- Solution oriented, encouraging synergy, loyalty and commitment;
- Benefit all actors in the coffee sector;
- Multi-stakeholder based; Open forums.



SCOPI's Board and Secretariat

Executive Board



RICHARD ATMADJA

PT. MAYORA INDAH, TBK

CHAIRMAN



WILDAN MUSTOFA

CV. FRINSA AGROLESTARI

SECRETARY



PUTRA AGUNG

RAINFOREST ALLIANCE

TREASURER



SYAHRUDI

NESTLE INDONESIA

MEMBER



R. PUJI SUMEDI H.

KEHATI

MEMBER



WAGIANTO

PT. INDO CAFECO-ECOM

MEMBER



SENTHIL NATHAN

ENVERITAS

MEMBER



EKO PURNOMOWIDI

KOPERASI KLASIK BEANS

MEMBER



JENI PAREIRA

WILDLIFE CONSERVATION SOCIETY

MEMBER

SCOPI's Board and Secretariat



ERWIN NOVLANTO

FAIRTRADE

MEMBER



NONIE KABAN

RIKOLTO

MEMBER

Supervisory Board



IRVAN HELMI

ANOMALI COFFEESHOP

CHAIRMAN



DUMASI M. SAMOSIR

PT. ASURANSI SINARMAS

MEMBER



VIOLACE PUTRI

IDH INDONESIA

MEMBER

Advisory Board



BAYU KRISNAMURTHI

INSTITUT PERTANIAN BOGOR

CHAIRMAN



WISMAN DJAJA

NESTLE INDONESIA

MEMBER



VERONICA HERLINA

SAKA DALA

MEMBER

Secretariat



EMAN W. PUTRA

EXECUTIVE DIRECTOR



BAGUS PRASSETYA

PROGRAM MANAGER



ILHAM B. WIDAGDO

STAFF PROGRAM



PURNAMA GRAHA

STAFF GA & OPERATION



TOTA JORDAN S.

COMMUNICATION SUPPORT



DAVID NICHOLAS F.

ADMINISTRATION SUPPORT



SCOPI Work Achievements

LOBBYING AND ADVOCACY WITH LOCAL AND CENTRAL GOVERNMENTS

As an effort to support the alignment of work programs carried out by SCOPI with the government, during 2022 SCOPI has held several meetings, hearings and discussions with government partners. This activity was carried out in order to explain SCOPI's activities and work programs, get updates on government work programs and activities, to align activities that can be carried out jointly both at the regional and central levels. The following is a summary of the meeting activities carried out by SCOPI in 2022 with local and central governments:



- Audience with the Directorate General of BPPSDMP, Ministry of Agriculture of the Republic of Indonesia, to discuss the Master Trainer Upgrade Program and Profession Certification activities.
- Meeting and Audience of the Farmer Assistance Program and Master Trainer Upgrade in the Central Aceh Region with the District Government and the Central Aceh District Agriculture Office.
- Meeting and Audience of the Farmer Assistance Program and Upgrade Master Trainer in the Karo Regency Area with the Regency Government and the Agriculture Office of Karo Regency, North Sumatra.
- Audience meeting with the Directorate of Plantation Plant Protection, Ministry of Agriculture in the context of discussing the Issue of Maximum Residue Limits in Exported Coffee Beans and Efforts to deal with this issue at the farmer level.



Collaboration in the Development and Implementation of the National Sustainable Coffee Curriculum (NSC) with Academics

In an effort to develop and implement the National Curriculum on Sustainable Coffee (NSC), SCOPI also involves Academics (campus/educational institutions) to participate and collaborate in activities that are being and will be carried out by SCOPI in the future. Academics who have several functions including research and community service, can contribute in terms of information and knowledge from the results of their research through mentoring activities for coffee farmers. SCOPI parties who have a Master Trainer network can be involved in information dissemination and innovation activities regarding cultivation and postharvest techniques developed by academics. In addition, with the function of community service, it is hoped that practical activities resulting from research conducted by academics can be more applicable and have a direct impact on coffee farmers. The hope is that the collaboration between SCOPI and academic parties can bridge the gap so that the functions of each party can support each other.



- MoU with Gajah Putih University in research and community service activities for coffee farmers in Takengon, Central Aceh
- MoU with Teuku Umar University, Meulaboh, Aceh in research activities, community service and capacity development of SCOPI Master Trainer resources.
- MoU with Faculty of Agriculture, University of Al Muslim Biereun – Aceh, in educational activities that support the Merdeka Learning Campus program and community service.
- MoU with Lampung State Polytechnic in the development and utilization of science and technology in the development of the coffee industry sector.

Workshop and Collaboration



On 21-22 June 2022, SCOPI was invited and attended a workshop initiated by the Ministry of Foreign Affairs of the Republic of Indonesia with the topic "Updating Performance and Strategy for Exporting Indonesian Coffee to the Global Market" which was held in Bali. On this occasion SCOPI had the opportunity to convey the opportunities and challenges in developing sustainable coffee in Indonesia.

SCOPI collaborated with the Alliance of Integrity and the Indonesia Global Compact Network which is funded by the Government of Germany. During the discussion held on 09 and 17 November 2022, SCOPI conveyed the Sustainable Coffee Reference Code and the important role of its application in efforts to uphold human rights, prevent corruption, and increase the value of transparency in the coffee supply chain.



SCOPI Work Achievements

SCOPI also collaborated with the Yayasan Indonesia CERAH in a Public Discussion and Report Dissemination activity on the impact of climate change on the Productivity of the Indonesian Agricultural Sector which was held on December 6, 2022. SCOPI was one of the keynote speakers in the public discussion with the theme "Coffee Industry Sustainability Amid Threats Climate Crisis" along with other speakers such as Dr. Elza Surmaini from IPB, Mr. Sutrisno from the Community Forestry Communication Forum and also from the Owner of Sagaleh Coffee.



Coffee Discussion and Webinars

Coffee Discussion on "Environmentally Friendly Approaches in Efforts to Reduce Herbicide Use in Coffee Plantations in Indonesia" on 20 July 2022 with one of the SCOPI members, Pandawa Agri Indonesia. This coffee discussion activity was attended by 138 participants via zoom who came from various backgrounds, including from the private sector, the government and also the SCOPI Master Trainer.



SCOPI Work Achievements

Coffee Discussion on "Concepts and Principles of Coffee Agroforestry Management and Their Impact on Coffee Farmers in Indonesia" on October 13, 2022. The activity which was attended by around 119 participants through a zoom meeting, involved speakers from World Agroforestry, Rikolto, Hanns R. Neumann Stiftung and Wildlife Conservation Society (WCS).



The Coffee Discussion with the theme "Biochar and Compost in Climate Change Mitigation and Adaptation Efforts" was held on November 10, 2022. SCOPI in this activity invited academics from the University of Lampung as one of the speakers. Apart from Unila, SCOPI also invited speakers from HRNS who explained about case studies on the application of the use of Biochar and Compost in climate change adaptation to coffee farmers in South Oku Regency, South Sumatra Province. This activity was attended by 123 participants from government and private extension workers, academics, NGOs, as well as coffee farmers and SCOPI master trainers.



SCOPI Work Achievements

The last coffee discussion in 2022 was held on December 13, 2022 with the theme "Efforts to Increase Sustainable Coffee Productivity". In this coffee discussion activity, SCOPI invited Ms. Retno Hulupi who is a SCOPI Grand Master Trainer as well as a senior researcher from Puslitkoka as one of the speakers. In addition, SCOPI also invited BRIN (National Research and Innovation Agency) and Rikolto to be involved in the activity. In this discussion activity, it was recorded that 141 participants attended via zoom and took part in the activity online until it was finished.



Exhibition and Promotion

In Indonesia Premium Coffee Expo 2022 Exhibition event which was held at Lapangan Banteng on 14-16 June 2022, SCOPI was present in the series of activities. SCOPI introduced the National Sustainable Coffee Curriculum (NSC) to exhibition visitors, and at the event SCOPI also introduced coffee beans from SCOPI's master trainers and assisted farmers from various coffee-producing regions in Indonesia.

SCOPI Work Achievements

SCOPI actively participated in the Jakarta Coffee Week (Jakarta Coffee Week) activities, which were held on 11-13 November 2022 at City Hall Pondok Indah Mall 3, Central Jakarta. At the event, SCOPI collaborated with Sakadala Enterprise, Rainforest Alliance and the SCOPI Master Trainers by introducing coffee beans produced by the Master Trainers and their assisted farmers.

Apart from participating in the Coffee exhibition, at the Jacowee 2022 event SCOPI also actively participates in ongoing talk shows. Mr. Richard Atmadja as Chairman of Executive Board of SCOPI spoke about SCOPI's role in the upstream sector in the form of mentoring programs for farmers and multi-stakeholder collaboration in maintaining the competitiveness of Indonesian coffee so it can be more competitive in the world market.





Training Of Trainer Master Trainer

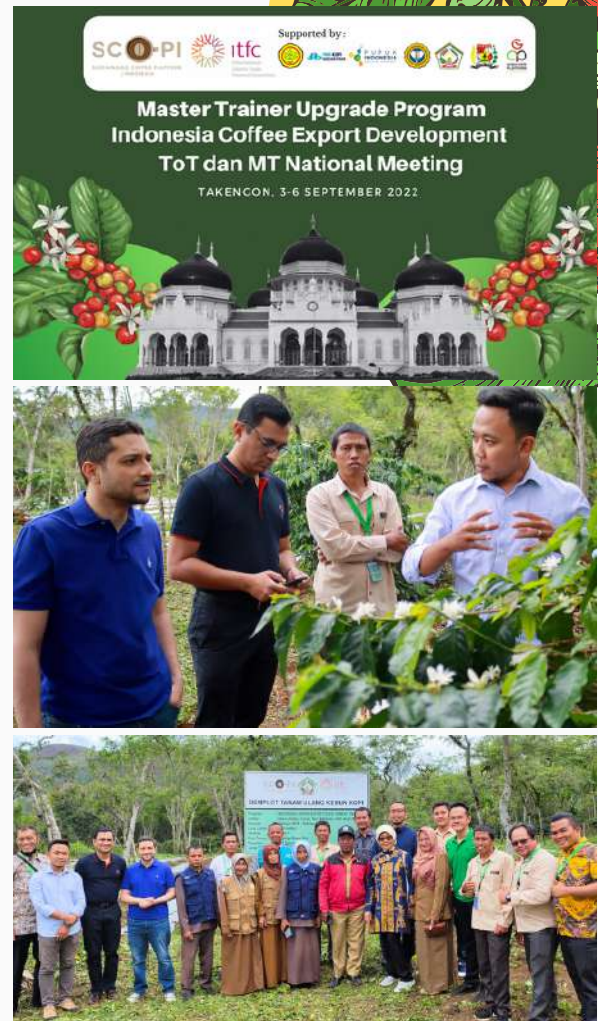
In September 2022, SCOPI held an Arabica Coffee Training of Trainer (ToT) activity in Takengon, Central Aceh district. The ToT activity which was carried out for 3 days (4-6 September 2022) was attended by a total of 38 training participants who were representatives of government extension workers, field staff of private companies, NGOs, universities and research institutions, as well as administrators/heads of cooperatives / farmer groups who have commitment to empowering and increasing the capacity of Arabica coffee farmers, especially in Aceh and North Sumatra.

The participants received room materials for 2 days and complete coffee farm practices materials for a full day. The resource persons for this training activity were Grand Master Trainers from the Indonesian Coffee and Cocoa Research Institute (ICCRI) and also from the Agricultural Training Center of Lampung



SCOPI Work Achievements

This activity is one of a series of collaborative programs between SCOPI and ITFC (International of Islamic Trade and Finance Corporation), namely the “Indonesia Coffee Export Development” program. The SCOPI-ITFC Master Trainer Upgrade Program has the main objective of increasing the quantity and quality of Indonesian coffee production in a sustainable manner through the capacity building of Master Trainers (MT) and the application of GAP (Good Agriculture Practices) by coffee farmers. The success of this ToT activity is inseparable from the support that SCOPI received from the Aceh Provincial Government, Central Aceh District Government, Karo District Government, the Global Coffee Platform and contributions from PMO Kopi Nusantara, Pupuk Indonesia Holding Company, and also from Pupuk Iskandar Muda.



Master Trainer National Meeting (MT National Meeting)

One of SCOPI's (Sustainable Coffee Platform of Indonesia) efforts to increase the productivity and quality of coffee commodities and improve the welfare of farmers is to provide assistance to farmers through sustainable and post-harvest cultivation training using the National Sustainability Curriculum (NSC). As a strategic intervention step to increase the impact of the mentoring program for coffee farmers, in 2022 SCOPI in collaboration with The International Islamic Trade Finance Corporation (ITFC) held a Hybrid MT (Master Trainer) National Meeting (Offline and Online) on 6 September 2022 in Parkside Gayo Petro Takengon, Central Aceh District, Aceh Province.

SCOPI Work Achievements

The MT National Meeting 2022 activity is expected to be a venue for refreshment and preparation for actions to improve MT competence in the future, after the MT National Meeting activities were hampered in the last two years due to the COVID-19 pandemic. The activity which was attended by 133 Master Trainers from all over Indonesia (both on-site and online) had several objectives including:

- Submission of the SCOPI-ITFC program related to MT competency improvement and its follow-up;
- Organizing sharing sessions regarding the latest challenges and opportunities in the coffee sector in each MT work area;
- Disseminate the latest knowledge and priorities to MT to face challenges in implementing sustainable coffee cultivation.



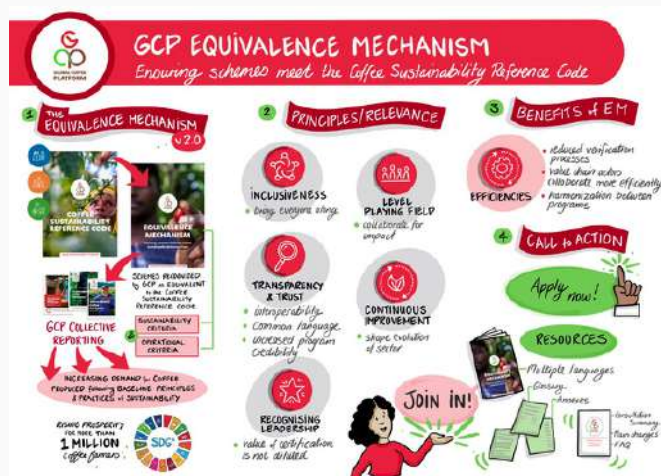
SCOPI - Global Coffee Platform

SCOPI was honored to share in the GCP Forum (Global Coffee Platform) the implementation of the Farm Service Principles which is one of the very important drivers of the Economic Dimensions principle in the Coffee Sustainability Reference Code.

Implementation of the principle of opening access for all producers without discrimination (eg gender or age) to services, inputs and information to enable increased productivity and quality. The Sustainable Coffee Reference Code can be accessed via the following channel:

<https://www.globalcoffeeplatform.org/ourwork/coffee-sustainability-reference-code/>

The Global Coffee Platform (GCP) has released a revised version of the GCP Equal Mechanism, an innovative building block to support the continuous increase in purchases of coffee produced following the basic principles and practices of sustainability across the industry.



'EVENTO COM TRADUÇÃO SIMULTÂNEA PARA PORTUGUES'

Exploring the Coffee Sustainability Reference Code

Member Workshop #3: Economic Dimension

Participants from across the value chain and beyond will collaboratively examine the Coffee SR Code's Economic Dimension by discussing its three supporting principles: Business Management, Agricultural Services and Business Integrity.

25 AUGUST 2022 | 3:15 PM CET | 09:15 AM ET
EXCLUSIVO TO GCP MEMBERS - REGISTER NOW!

zoom

The Equivalence Mechanism (EM) was launched on 3 November 2022 with the International Trade Center (ITC), which exists as an implementation partner for the assessment of sustainability schemes that wish to be recognized as credible and follow at least a baseline of sustainability practices.

The Equality Mechanism can be accessed through the following channels:

<https://www.globalcoffeeplatform.org/ourwork/gcp-equivalence-mechanism/>



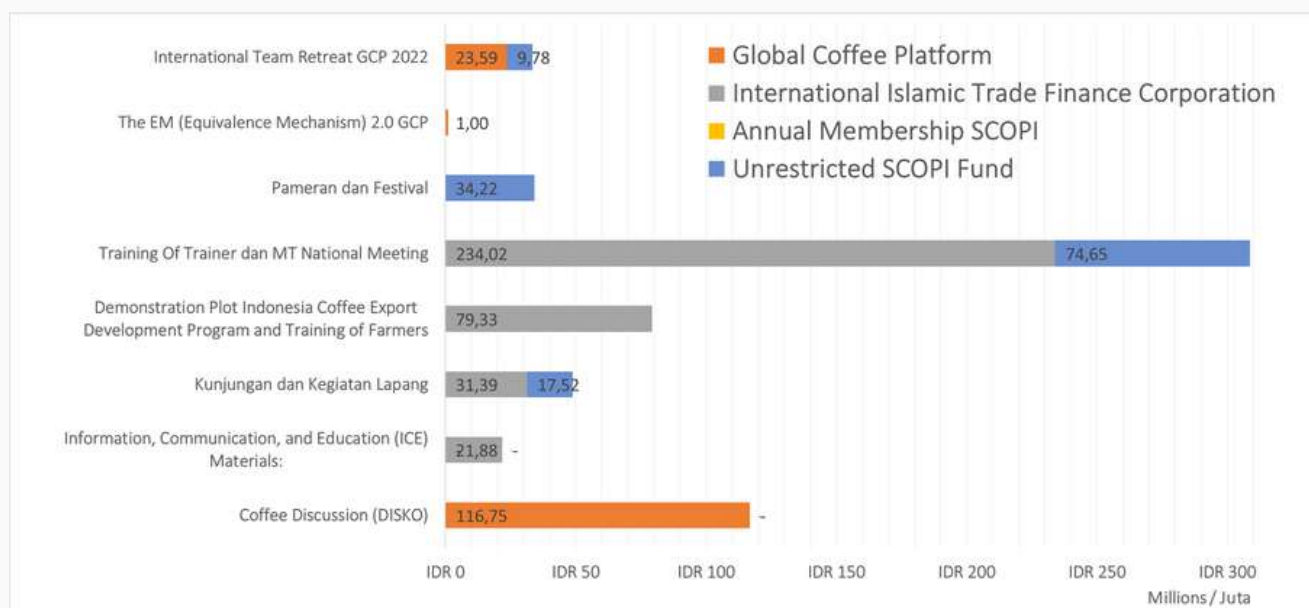
Fund Allocation Summary



SCOPI's funding sources for 2022 are based on 3 donor sources and an Annual Membership in the amount of Rp. 2,278,027,467.35, with details:



As for the allocation of the use of funds from SCOPI funding sources as follows:



MEMBERSHIP AND PARTNERSHIP

COMPANY/ORGANIZATION NAME	DATE AND YEAR OF JOINING
Gabungan Eksportir Kopi Indonesia (GAEKI)	31 March 2015
Koperasi Murbeng Puntang	31 March 2015
PT. Anomali Coffee	31 March 2015
PT. Mayora Indah, Tbk	31 March 2015
PT. Nestlé Indonesia	31 March 2015
Rikolto	31 March 2015
SNV Netherlands Development Organisation	31 March 2015
Sucafina	31 March 2015
Yayasan Inisiatif Dagang Hijau (IDH)	31 March 2015
Jacobs Douwe Egberts B.V. (JDE)	08 June 2015
PT. Aneka Coffee Industry	08 June 2015
PT. Berjaya Lancar Terus (My Kopi O!)	08 June 2015
PT. Indo Cafco (ECOM)	08 June 2015
PT. Nedcoffee Indonesia (Sucden Coffee)	08 June 2015
Yayasan Solidaridad Network Indonesia	08 June 2015
Fairtrade Network Of Asia & Pacific Producers	June 23, 2015
Hanns R. Neumann Stiftung (HRNS)	June 23, 2015
Rainforest Alliance	June 23, 2015
RE MARK ASIA / Asia Institute Of Knowledge	June 23, 2015
PT. Javanero Indonesia Arta	02 August 2015
Koperasi Mitra Malabar	20 May 2016
PT. Asal Jaya	20 May 2016
PT. Olam Indonesia (OFI)	27 June 2016
CV. Frinsa Agrolestari	03 October 2016
Lutheran World Relief (LWR)	03 October 2016
Enveritas	15 May 2018
PT. Sentral Arta Makmur	15 May 2018
PT. Sulotco Jaya Abadi	15 May 2018
Wildlife Conservation Society - Indonesia	15 May 2018
PT. Asuransi Sinar Mas	25 May 2018
Yayasan Bitra Indonesia	25 May 2018
Yayasan Keanekaragaman Hayati Indonesia	01 July 2020
PT. LDC Trading Indonesia	01 July 2020
Rumah Kolaborasi (RUKO)	01 January 2021
PT. Cipta Kemas Alami (GRAINPRO)	01 January 2021
Koperasi Klasik Beans	01 January 2021

COMPANY/ORGANIZATION NAME	DATE AND YEAR OF JOINING
PT. Berangan Ragam Rasa (BERAGAM)	27 April 2021
PT. Karya Tetangga Tuku (Toko Kopi Tuku)	27 April 2021
PT. Wangsa Kopi Gayo	30 April 2021
UD. Maju Mandiri	01 March 2021
PT. Pupuk Indonesia (Persero)	08 November 2021
Subak Abian Tri Guna Karya	16 December 2021
Lingkar Temu Kabupaten Lestari	01 January 2022
MPIG Manggarai	01 January 2022
PT. Berindo Jaya	01 January 2022
PT. Pandawa Agri Indonesia	01 January 2022
PT. Akademi Kopi Indonesia (Indonesia Coffee Academy)	01 July 2022

SCOPI PARTNERS

GOVERNMENT AGENCY NAME

COORDINATING MINISTRY FOR ECONOMIC AFFAIRS OF THE REPUBLIC OF INDONESIA
 MINISTRY OF AGRICULTURE OF THE REPUBLIC OF INDONESIA
 MINISTRY OF COOPERATIVE AND SMALL AND MEDIUM ENTERPRISES OF THE REPUBLIC OF INDONESIA
 MINISTRY OF TRADE OF THE REPUBLIC OF INDONESIA
 MINISTRY OF INDUSTRY OF THE REPUBLIC OF INDONESIA
 MINISTRY OF STATE OWN ENTERPRISE OF THE REPUBLIC OF INDONESIA
 MINISTRY OF ENVIRONMENT AND FORESTRY OF THE REPUBLIC OF INDONESIA
 MINISTRY OF LAW AND HUMAN RIGHT OF THE REPUBLIC OF INDONESIA
 MINISTRY OF HOME AFFAIRS OF THE REPUBLIC OF INDONESIA
 MINISTRY OF TOURISM AND CREATIVE ECONOMY OF THE REPUBLIC OF INDONESIA
 LAMPUNG PROVINCIAL GOVERNMENT- PLANTATION OFFICE OF LAMPUNG PROVINCE
 WEST JAVA PROVINCIAL GOVERNMENT - PLANTATION OFFICE
 SOUTH SUMATERA PROVINCIAL GOVERNMENT - PLANTATION OFFICE
 JAMBI PROVINCIAL GOVERNMENT - PLANTATION OFFICE
 LOCAL GOVERNMENT OF ENREKANG REGENCY- AGRICULTURE OFFICE
 LOCAL GOVERNMENT OF NORTH TORAJA REGENCY - AGRICULTURE OFFICE
 LOCAL GOVERNMENT OF CENTRAL ACEH REGENCY - AGRICULTURE OFFICE
 LOCAL GOVERNMENT OF LAHAT REGENCY - AGRICULTURE OFFICE
 LOCAL GOVERNMENT OF DAIRI REGENCY - AGRICULTURE OFFICE
 LOCAL GOVERNMENT OF BANDUNG REGENCY- AGRICULTURE
 HORTICULTURE, AND PLANTATION OFFICE
 LOCAL GOVERNMENT OF WAY KANAN REGENCY- PLANTATION OFFICE
 LOCAL GOVERNMENT OF BOGOR REGENCY- CROPS, HORTICULTURE, AND PLANTATION
 OFFICE
 LOCAL GOVERNMENT OF BANYUWANGI REGENCY- AGRICULTURE OFFICE

LOCAL GOVERNMENT OF WEST MANGGARAI REGENCY – CROPS, HORTICULTURE, AND PLANTATION OFFICE
 LOCAL GOVERNMENT OF MANGGARAI REGENCY
 LOCAL GOVERNMENT OF EAST MANGGARAI REGENCY
 LOCAL GOVERNMENT OF BONDOWOSO REGENCY
 LOCAL GOVERNMENT OF WEST LAMPUNG REGENCY
 LOCAL GOVERNMENT OF MERANGIN REGENCY– DEVELOPMENT, INOVATION, AND TECHNOLOGY
 LOCAL GOVERNMENT OF KARO REGENCY– AGRICULTURE OFFICE
 LOCAL GOVERNMENT OF MALANG REGENCY– AGRICULTURE AND PLANTATION OFFICE
 LOCAL GOVERNMENT OF PANIAI REGENCY– LIVESTOCK AND PLANTATION OFFICE
 LOCAL GOVERNMENT OF SIMALUNGUN REGENCY – AGRICULTURE OFFICE
 LOCAL GOVERNMENT OF DEIYAI REGENCY– AGRICULTURE OFFICE
 LOCAL GOVERNMENT OF DOGIYAI REGENCY– AGRICULTURE OFFICE
 LOCAL GOVERNMENT OF BULUKUMBA REGENCY– AGRICULTURE OFFICE
 LOCAL GOVERNMENT OF NORTH LOMBOK REGENCY– AGRICULTURE OFFICE
 LOCAL GOVERNMENT OF HUMBANG HASUNDUTAN REGENCY– AGRICULTURE OFFICE
 CITY GOVERNMENT OF SUNGAI PENUH – CROPS, HORTICULTURE, AND PLANTATION OFFICE
 INDONESIAN EMBASSY IN FINLANDIA
 INDONESIAN EMBASSY IN SINGAPORE
 INDONESIAN EMBASSY IN GERMANY
 INDONESIAN EMBASSY IN BELGIUM

SCOPI'S PARTNERS NON-GOVERNMENT

INTERNATIONAL ISLAMIC TRADE FINANCE CORPORATION (ITFC)
 INSTITUT PERTANIAN BOGOR (IPB)
 PISAGRO
 UNIVERSITAS SYDNEY
 HARUKA EDU
 BANK INDONESIA
 ACICIS
 UNIVERSITAS BINA NUSANTARA (BINUS)
 PUSAT PENELITIAN KOPI DAN KAKAO INDONESIA
 UNIVERSITAS MAJALENGKA
 POLITEKNIK PEMBANGUNAN PERTANIAN MEDAN

2015 - 2021



2022





Members



Enveritas



SENTRAL ARTA MAKMUR



Berindo Jaya



CORUS



KEHATI
Biodiversity Conservation Trust Fund



PANDAWA AGRI INDONESIA

