

# ANNUAL REPORT 2021

---

Sustainable Coffee Platform of Indonesia

# ANNUAL REPORT 2021

---

Sustainable Coffee Platform of Indonesia

COHIVE UPTOWN TIMOR  
JL. TIMOR NO. 16, GONDANGDIA, MENTENG,  
JAKARTA PUSAT, INDONESIA 10350  
INFO@SCOPI.OR.ID | WWW.SCOPI.OR.ID

# TABLE OF CONTENTS

I. WELCOMING REMARKS	3
II. ABOUT SCOPI	4
III. BOARD MEMBERS AND SECRETARIAT TEAM	5
IV. MAP OF SCOPI'S WORKING AREA	6
V. SCOPI'S ACHIEVEMENTS 2021	7
VI. FUND ALLOCATION SUMMARY FOR 2021	19
VII. SCOPI MEMBERS AND PARTNERS	20
VIII. SCOPI DONORS	23
IX. LIST OF DONORS, PARTNERS, AND MEMBERS' LOGO	24

# I. WELCOMING REMARKS



**Richard Atmadja**  
**Chairman of Executive Board**  
**Period of 2021 – 2024**

2021 was a challenging year for many people due to the COVID-19 pandemic and newly launched regulations. No exception for SCOPI stakeholders consisting of farmer cooperatives, private sectors, and other parties along the supply chain. SCOPI's role as conveners is the key to supporting each other, strengthening each other. This done by several SCOPI programs, including DISKO (Coffee Discussion).

Interestingly in 2021, SCOPI makes it "closer gap" between upstream and downstream in the sense of needing each other. It is increasingly resuscitating many coffee stakeholders to maintain the preservation of nature. The point of view of dependence on only one supply chain and one commodity makes stakeholders aware that there is still plenty of room to develop. Topics such as pesticide use, multi-cropping, healthy supply chains, maintaining/increasing coffee consumption became hot topics in various talks.

This year there are several new programs that have been successfully carried out well, including visits to partners in East Nusa Tenggara (NTT), KAPUCINO (publication media made by the SCOPI Secretariat), National Sustainable Coffee Stakeholders Meeting, Indonesia Sustainable Coffee Roadmap Workshop, baselining Master Trainer (MT), workshops rejuvenation of coffee plantations in Lampung, as well as the Indonesian Coffee Export Development Program in Aceh and North Sumatra Provinces with the creation of a demonstration plot that is very useful for the implementation of the next NSC program. SCOPI's large program, the National Sustainability Curriculum (NSC) has clearly evolved from a coffee curriculum implementor to an enabler and convener. This is seen from the start of the baselining and monitoring & evaluation program which aims to disseminate education on target, on time and effective. No less important all this takes place in parallel with the efforts to strengthen the SCOPI Secretariat which has made a lot of progress.

Many shortcomings that can be learned are also successes that need to continue and even be corrected. However, all SCOPI's efforts will be meaningless if trust in sustainable coffee is not fought with all stakeholders. Thank you to all Members for their trust, the Board of Trustees, Board of Trustees, Board of Trustees, Central Government and Local Government, Support Partners (Donors), Secretariat Team and other Partners, without all that support scopi's achievements would not have been as it is today.

Here is to the spirit of SCOPI! Towards sustainable coffee in Indonesia!



## II. ABOUT SCOPI

Sustainable Coffee Platform of Indonesia (SCOPI) is a non-profit organization as a form of association established on 31 March 2015, of stakeholders in coffee supply-chain who have concerns towards development and sustainability of coffee in Indonesia.

SCOPI has principles in organizing to achieve the vision and mission, which is:

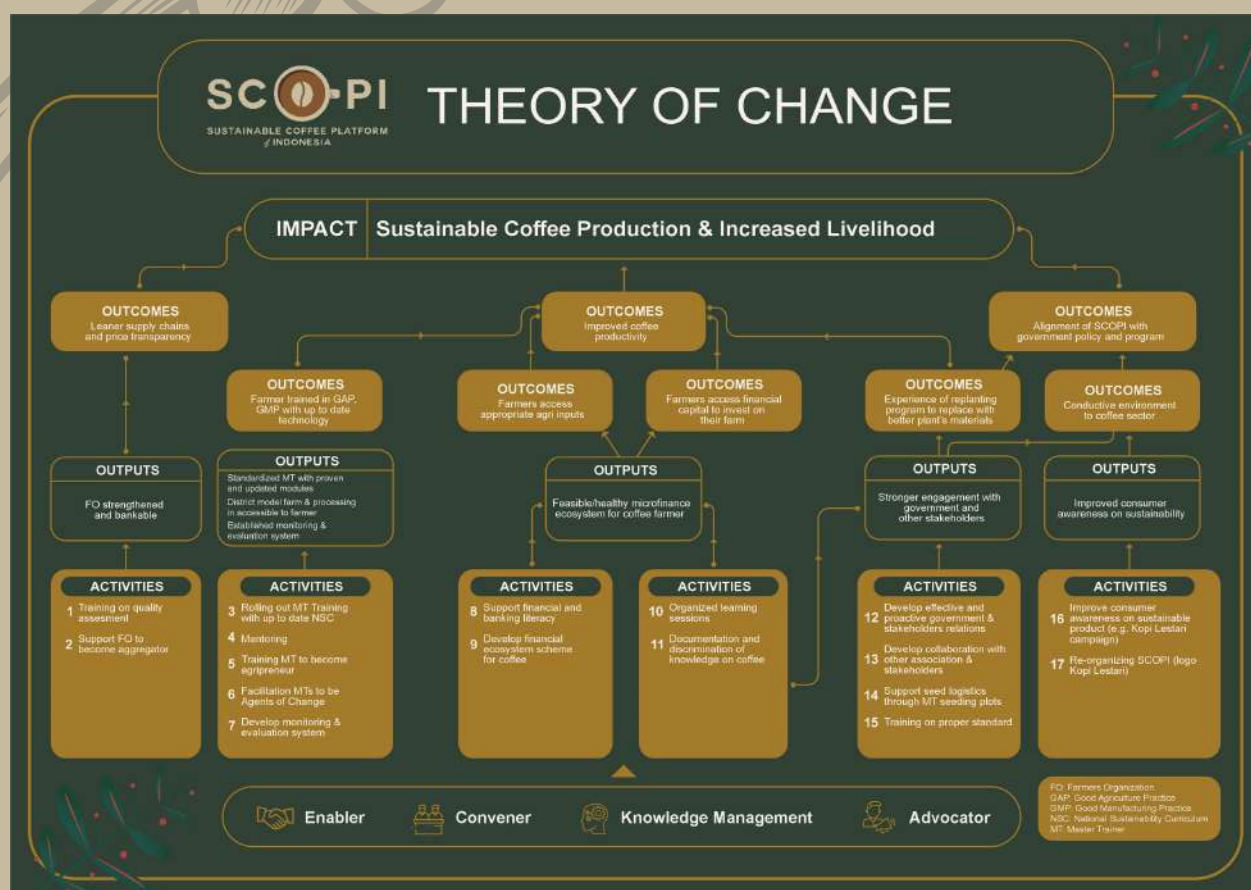
- Inclusive, participatory, democratic
- Neutral, pre-competitive
- Farmer-centered
- Solution-oriented, encouraging synergy, loyalty, and commitment
- Multistakeholder-based
- Open Forum

SCOPI has a vision to promote and improve Public-Private Partnership (PPP) in coffee commodities to achieve:

- Economic opportunities for farmers
- Food Security
- Environmental Sustainability

Also, has missions as follow:

- The core driver of SCOPI is development of Public-Private Partnership (PPP) for the actors in the coffee sector across Indonesia
- SCOPI facilitates the sharing of learning and best practices, as well as alignment of all programs leading towards synergy in the coffee sector
- SCOPI promotes collaboration with other national coffee associations



### III. BOARD MEMBERS AND SECRETARIAT TEAM

SCOPI Executive Board

Treasurer of Executive Board



Putra Agung  
Rainforest Alliance

Chairman of Executive Board



Richard Atmadja  
PT. Mayora Indah, Tbk

Secretary of Executive Board



Wildan Mustofa  
CV. Frinsa Agrolestari

Member of Executive Board



Syahrudi  
PT, Nestle Indonesia



Renata Puji Sumedi  
Yayasan KEHATI



Wagiatno  
PT. Indo Cefco - ECOM



Senthil Nathan  
Enveritas



Eko Purnomowidi  
Koperasi Klasik Beans



Jeni Pareira  
Wildlife Conservation Society



Erwin Novianto  
Fairtrade - NAPP



Nonie Kaban  
Rikolto

SCOPI Supervisory Board

Chairman of the  
Supervisory Board



Irvan Helmi  
PT. Anomali Coffee

Supervisory Board Member



Fitriani Ardiansyah  
Yayasan Inisiatif Dagang Hijau

Supervisory Board Member



Dumasi M.M. Samosir  
PT. Asuransi Sinar Mas

SCOPI Advisory Board



Bayu Krisnamurthi



Leony Aurora



R. Wisman Djaja

SCOPI Secretariat

Executive Director



Paramita Mentari Kesuma  
(March 2020 - December 2021)



Eman Wisnu Putra  
(Februari 2022 - Now)

Head of General Affairs & Operations



Ginanjar Prasetyo Utomo  
(February 2021 - Now)

General Affairs & Operations Officer



Purnama Graha  
(Desember 2019 - Now)

Program Officer



Natasha Trisyani W  
(January 2021 - July 2021)

Program Assistant



Annassytassya Nurul Hidayati  
(November 2021 - February 2022)  
Previously Administrative Support  
(January 2021 - October 2021)  
Communications Staff



Program Coordinator  
Ferhad Alsadad  
(October 2021 - December 2021)



Administrative Support  
David Nicholas  
(October 2021 - Now)  
Previously Intern  
(November 2020 - September 2021)



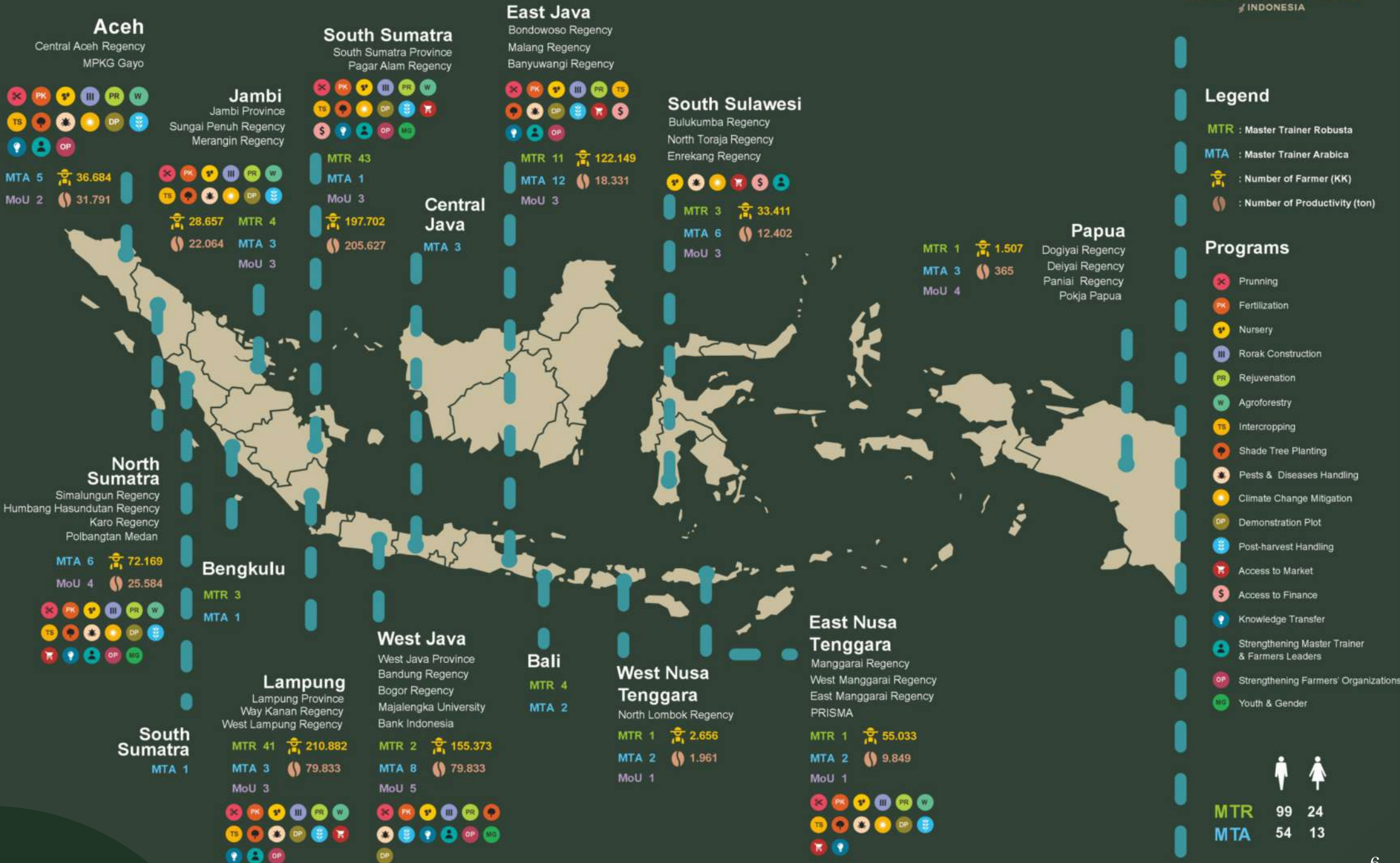
Program Officer  
Ilham Bayu Widagdo  
(January 2022 - Now)



Communications Staff  
Tota Jordan Sitanggang  
(November 2021 - Now)  
Previously Intern  
(June 2021 - October 2021)



# IV. MAP OF SCOPI'S WORKING AREA



# V. SCOPI'S • ACHIEVEMENTS 2021

## A Lobby and Advocacy with Central and Regional Government

SCOPI always ensures alignment with the Government's work plans and programs, to support the targets of relevant stakeholders in the policy sector. During 2021, various meetings, discussions, and audiences were held with Government partners, both to introduce SCOPI programs and activities, to obtain updates on related Government programs and policies, as well as to follow up on previous partnerships. In addition, several Memorandums of Understanding (MoU) have been signed with several representatives of the Provincial and Regional Governments. Lobby, advocacy, and hearings conducted by SCOPI during 2021, including:

1. Ministry of State-Owned Enterprises (BUMN)
2. Government of Bali Province
3. Government of West Java Province
4. Government of Aceh Province
5. Government of Central Aceh Regency
6. Government of Karo Regency
7. Government of Bener Meriah Regency
8. Government of Bone Bolango regency

In 2021, SCOPI has successfully signed several Memorandum of Understandings (MoUs) which contain the scope of activities as follow:

- Improvement of Knowledge and Skills in Good Agricultural Practices (GAP) for Coffee Cultivation; and
- Improvement of Knowledge and Skills in Post-harvest Sustainable Coffee

The scope of the Program referred to in this Memorandum of Understanding is as referred to in the training syllabus in the National Training Guide Curriculum and Manual of Sustainable Cultivation Training (Good Agriculture Practices/ GAP) and Post-harvest (Post-harvest) Sustainable Coffee.

There have been 2 (two) MoUs signed with several Regional Governments, namely the Government of Bali Province represented by the Bali Province Agriculture and Food Security Service and the Government of Bone Bolango Regency. In addition, SCOPI also signed a Memorandum of Understanding with Lingkar Temu Kabupaten Lestari (LTKL), Partnership For Indonesia Sustainable Agriculture (PISAgro), Cocoa Sustainability Partnership (CSP) within the scope of support for improving the agricultural sector in Indonesia. Through the signing of the MoU, SCOPI hopes to work together with the local government in planning programs that benefit coffee farmers in Indonesia and can continue to promote and promote sustainable coffee in Indonesia. Support from the Central and Regional Governments is very important for SCOPI to continue to benefit the coffee sector in Indonesia.



# B. Newsletter KAPUCINO

PERIOD	TOPIC	DESCRIPTION
JANUARY 2021	KABAR SEPUTAR CERITA INSPIRATIF SCOPI (KAPUCINO)	<ol style="list-style-type: none"> <li>1. EFFORT TO SUPPORT PUBLIC-PRIVATE PARTNERSHIP TO SUPPORT COFFEE SECTOR IN BALI PROVINCE</li> <li>2. COFFEE FARMERS TRAINING IN BOGOR REGENCY WITH HSBC &amp; RAINFOREST ALLIANCE</li> <li>3. YOUNG COFFEE-PRENEUR TRAINING IN LAMPUNG, IN COLLABORATION BETWEEN SCOPI, MEMBERS AND PARTNERS ABOUT SUSTAINABLE COFFEE EDUCATION &amp; CLIMATE CHANGE ADAPTATION</li> <li>4. BUILDING CAPACITY - DYNAMICS WORKSHOP &amp; SYSTEM THINKING FOR SCOPI SECRETARIAT</li> <li>5. SCOPI MASTER TRAINERS PROFILE : I WAYAN WARTA &amp; RINIATY LIKU BULAWAN</li> </ol>
MARCH 2021	KABAR SEPUTAR CERITA INSPIRATIF SCOPI (KAPUCINO)	<ol style="list-style-type: none"> <li>1. NATIONAL SUSTAINABLE COFFEE STAKEHOLDERS MEETING 2021</li> <li>2. COFFEE AGRICULTURAL PRACTICES BASED ON AGROFORESTRY IN WEST JAVA</li> <li>3. EARLY YEAR DISCUSSION WITH MASTER TRAINER ALL AROUND INDONESIA</li> <li>4. SCOPI MASTER TRAINERS PROFILE : ENDANG SUTIONO &amp; ARIEF WICAKSONO</li> </ol>
MAY 2021	KABAR SEPUTAR CERITA INSPIRATIF SCOPI (KAPUCINO)	<ol style="list-style-type: none"> <li>1. RESULTS OF THE ELECTION OF THE SCOPI MANAGEMENT AND SUPERVISORY BOARD FOR THE 2021-2024 PERIOD AND THE 2021 GENERAL MEETING OF MEMBERS (RUA)</li> <li>2. COFFEE FARMER'S MIND ARTICLES</li> <li>3. DISKO: CLIMATE CHANGE ADAPTATION FOR COFFEE FARMERS IN INDONESIA</li> <li>4. PROFILE &amp; PHOTOS OF : <ul style="list-style-type: none"> <li>• CHAIRMAN OF THE SCOPI EXECUTIVE BOARD - RICHARD ATMADJA</li> <li>• VICE CHAIRMAN OF THE SCOPI EXECUTIVE BOARD - WILDAN MUSTOFA</li> <li>• SCOPI EXECUTIVE BOARD 2021-2024</li> </ul> </li> </ol>

PERIODE	TEMA	DESKRIPSI
JULY 2021	KABAR SEPUTAR CERITA INSPIRATIF SCOPI (KAPUCINO)	<ol style="list-style-type: none"> <li>1. WORKSHOP AND FIELD VISIT ON SUSTAINABLE COFFEE GOVERNANCE FOR COMMUNITY ECONOMIC IMPROVEMENT IN MANGGARAI REGENCY, EAST NUSA TENGGARA PROVINCE</li> <li>2. SCOPI VISITS TO ACEH AND NORTH SUMATRA PROVINCES: AUDIENCES WITH DISTRICT GOVERNMENTS &amp; FIELD VISITS</li> <li>3. DISKO: OVERVIEW OF THE POTENTIAL IMPACT OF INTERVENTION ON THE COFFEE AGROFORESTRY SYSTEM ON GENDER DYNAMICS IN PAGAR ALAM DISTRICT, SOUTH SUMATRA</li> <li>4. DISKO: IMPROVING THE RESILIENCE OF COFFEE FARMERS IN INDONESIA REGARDING NEW POLICIES RELATED TO THE "EUROPEAN GREEN DEAL"</li> <li>5. COLLABORATION BETWEEN SCOPI AND PROFILEPRINT</li> <li>6. SCOPI MEMBER PROFILE</li> </ol>
SEPTEMBER 2021	KABAR SEPUTAR CERITA INSPIRATIF SCOPI (KAPUCINO)	<ol style="list-style-type: none"> <li>1. INDONESIA SUSTAINABLE COFFEE ROADMAP WORKSHOP</li> <li>2. BALI SUSTAINABLE COFFEE FORUM FOR DISASTER RECOVERY 2021: DISASTER RECOVERY GOVERNANCE IN BALI PROVINCE BASED ON STRENGTHENING THE COFFEE SECTOR</li> <li>3. TRAINING OF YOUNG ENTREPRENEURS IN THE COFFEE SECTOR IN BALI PROVINCE</li> <li>4. KAPUCINO QUIZ</li> <li>5. SCOPI MEMBERS PROFILE</li> </ol>
NOVEMBER 2021	KABAR SEPUTAR CERITA INSPIRATIF SCOPI (KAPUCINO)	<ol style="list-style-type: none"> <li>1. COFFEE PLANTATION REJUVENATION WORKSHOP FOR NATURE IMPROVEMENT AND CONSERVATION IN WEST LAMPUNG REGENCY</li> <li>2. INDONESIA PAVILION TALK SHOW UNFCCC COP26: PROMOTING TRANSPARENCY AND TRACEABILITY IN FOREST, AGRICULTURAL COMMODITIES AND TRADE (FACT) TO ACHIEVE FAIR AND SUSTAINABLE TRADE</li> <li>3. INDONESIAN COFFEE EXPORT DEVELOPMENT PROGRAM IN THE PROVINCES OF ACEH AND NORTH SUMATRA, INDONESIA</li> <li>4. STEPS TOWARDS SUSTAINABLE COFFEE</li> <li>5. SCOPI MEMBER PROFILE: SUBAK ABIAN TRI GUNA KARYA</li> </ol>

# C Coffee Discussion (DISKO), Forum, Workshop, and Webinar

The Coffee Discussion Activity/Diskusi Kopi (DISKO) has been carried out by SCOPI since 2019 to facilitate the exchange of information and gather aspirations, lessons learned and success stories from various stakeholders related to current coffee-related topics both nationally and internationally. Since then, DISKO has been one of SCOPI's highlighted activities to promote "sustainable coffee" to the wider community and to strengthen SCOPI's network with various stakeholders in the coffee sector.

01

## Webinar: Baseline Coffee Code (BCC)

1 April 2021

Supported by:

Global Coffee Platform (GCP), Grand Master Trainer SCOPI, PT. Mayora Indah Tbk, PT. Asal Jaya

02

## DISKO: Climate Change Adaptation for Coffee Farmers in Indonesia

15 April 2021

Supported by:

Winrock International, Centre for Climate Risk and Opportunity Management (CCROM), PT. IndoCafco

03

## Workshop on Sustainable Coffee Governance for Community Economic Improvement in Manggarai Regency, East Nusa Tenggara Province

28 May 2021

Supported by:

Master Trainer SCOPI - NTT, Rikolto, Yayasan Kehati

04

## DISKO: Improving Indonesian Coffee Farmers' Resilience in Facing the 'European Green Deal'-Related Policies

2 June 2021

Supported by:

Kedutaan Besar Republik Indonesia di Belgia - Brussels & European Coffee Federation (ECF)



05

## DISKO: Gender in Coffee Agroforestry

10 June 2021

Supported by:

Yayasan IDH, JDE Peets, Koperasi KlasikBeans, Rainforest Alliance, Nestle Indonesia, Sucden Coffee, ICRAF

06

## Access to Finance Program with International Islamic Trade Finance Corporation (ITFC)

29 June 2021

Supported by:

ITFC

07

## Bali Sustainable Coffee Forum for Disaster Recovery: Improving the Resilience of the Province of Bali Against the Disaster Impact of the Pandemic Through Strengthening the Coffee Sector

3 September 2021

Supported by:

Government of Bali Province, Badan Nasional Penanggulangan Bencana (BNPB), SIAP SIAGA, IDH Indonesia, PT. Anomali Coffee, Rikolto

08

## Workshop on Rejuvenation of Coffee Farms for Enhancement and Conservation of Nature in Lampung Province

30 September 2021

Supported by:

Government of West Lampung Regency, Government of Lampung Province, PT. LDC Trading Indonesia, IDH Indonesia, Rainforest Alliance, ICCRI, PT. Mayora Indah Tbk, Wildlife Conservation Society, Nestle Indonesia

09

## DISKO: Living Income for Indonesia Coffee Origin

29 October 2021

Supported by:

Fairtrade International & NAPP, Yayasan Aceh Hijau

10

## Roundtable Technical Experts Discussions: Living Income for Indonesia Coffee Origin

11 November 2021 - 26 November 2021

Supported by:

Fairtrade International & NAPP, Yayasan Aceh Hijau

# D<sub>o</sub> Field Visits to SCOPI Members in West Java

This activity was carried out on 17-19 February 2021 to explore the potential scope of cooperation and the work location of SCOPI Members and Partners in West Java Province as a pilot for SCOPI activities in 2021. During this visit, SCOPI visited Murbeng Puntang Cooperative, KlasikBeans Cooperative, and CV. Java Frinsa. Through this activity, the SCOPI Secretariat Team succeeded in gaining more insight into the challenges and potentials in the coffee sector as well as the application of Good and Sustainable Coffee Cultivation Practices (GAP) at the field level.



# E<sub>o</sub> National Sustainable Coffee Stakeholder (NSCS) Meeting 2021

SCOPI held the National Sustainable Coffee Stakeholders Meeting 2021 on Monday, March 22, 2021, virtually. This activity was attended by 146 people including SCOPI Members, SCOPI Master Trainers, and SCOPI Partners. Participants were divided into 3 (three) major groups during the breakout room session, namely the West, Central, and East regions.

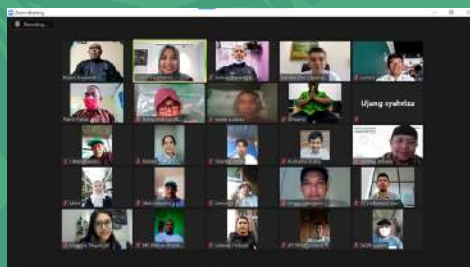
Through this activity, SCOPI with its members and partners hopes to further narrow the definition of "Sustainable Coffee" and reformulate the definition of sustainable coffee and mapping of stakeholders in the coffee sector in Indonesia. During the discussion session, participants were asked to provide input on keywords related to "Sustainable Coffee" with the result that 4 (four) keywords were chosen, namely Environmentally Friendly, Climate, Productivity, and Agroforestry.





# F GRAINPRO Hermetic Storage Trial Activities

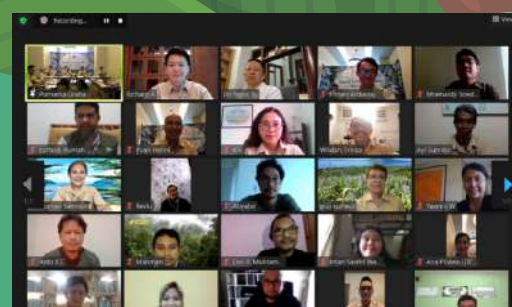
GRAINPRO is a Member of SCOPI which is a global company in Ultra Hermetic technology used for postharvest solutions covering drying, storage, and transportation. Hermetic storage is a storage method using an airtight storage container that helps slow or restrains the movement of air inside and outside the storage container, where oxygen levels will decrease and be replaced by carbon dioxide. The GRAINPRO bag trial activity began with a technical briefing on March 25, 2021, which was attended by 34 SCOPI Master Trainers from 6 (six) provinces, namely Java Province, Sumatra Province, Sulawesi Province, Bali Province, NTT Province, and NTB Province. This activity was carried out for 6 (six) months since the coffee harvest was finished in each participant area to see how the coffee yields were stored in GRAINPRO bags. In this activity, participants must also record humidity and temperature data inside and outside the bag and do cupping before and after storage.



# G General Members Assembly SCOPI

SCOPI has Articles of Association and Bylaws (AD/ART) which contain SCOPI policies in carrying out the roles and objectives of its organization. The AD/ART states that the General Meeting of Members (RUA) must be held every 3 (three) years with the agenda of selecting the SCOPI Management Board and Supervisory Board (Article 10 Paragraph 3a). Due to the Covid-19 pandemic, the RUA was held virtually on April 12, 2021, which was attended by SCOPI Members. The result of this activity was the election of the SCOPI Executive Board and Supervisory Board for the period 2021-2024 with the following composition:

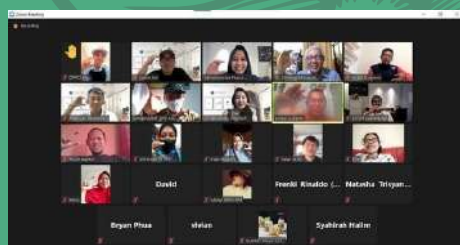
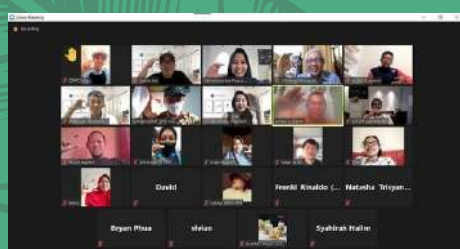
- Richard Widarta Atmadja, Chairman of Executive Board - PT. Mayora Indah Tbk
- Wildan Mustofa, Secretary of Executive Board - CV. Frinsa Agrolestari
- Putra Agung, Treasurer of Executive Board - Rainforest Alliance
- Rudi Syahrudi, Member of Executive Board - PT. Nestle Indonesia
- Kiki Purbosari, Member of Executive Board - Rikolto
- Eko Purnomowidi, Member of Executive Board - Koperasi Klasik Beans
- Senthil Nathan, Member of Executive Board - Enveritas
- Jeni Pareira, Member of Executive Board - WCS Indonesia
- Erwin Novianto, Member of Executive Board - Fairtrade APP
- Wagianto, Member of Executive Board - PT. Indo Cafco
- Puji Sumedi, Member of Executive Board - Yayasan KEHATI
- Irvan Helmi, Chairman of Supervisory Board - PT. Anomali Coffee
- Fitriani Ardiansyah, Member of Supervisory Board - Yayasan IDH Indonesia
- Dumasi MM Samosir, Member of Supervisory Board - PT. Asuransi Sinar Mas





# H. Grading Trial ProfilePrint

In April 2021, SCOPI has been collaborating with ProfilePrint – an award-winning Singapore-based company that focuses on rapid assessment of food ingredients with a patented Artificial Intelligence (A.I.) food fingerprinting technology. ProfilePrint's A.I. technology has been trained by professional Q-Graders, offering a more accurate, consistent, and rapid cupping solution. In this collaboration, ProfilePrint provides cupping and grading services for free for 5 (five) different coffee samples for Master Trainers, SCOPI Members, and Partners. This activity consisted of 3 (three) batches with a total of 40 participants and more than 200 coffee samples were sent.



## Indonesia Sustainable Coffee Roadmap Workshop (ISCRW)

SCOPI held a series of Indonesia Sustainable Coffee Roadmap Workshop (ISCRW) for 3 (three) days on 10, 12, and 13 August 2021 virtually with a total of 139 participants. In this activity, the participants had the opportunity to review the SCOPI Theory of Change by providing opinions, suggestions, and suggestions on areas that need to be revised or adapted to the relevance of the current challenges in the coffee sector. In addition, 4 (four) keywords in the 2021 NSCS Meeting were discussed in more detail and concluded that it is necessary to make a demonstration plot, Agroforestry module, and Climate module to complete the NSC (National Sustainable Curriculum). The follow-up to this activity is the formation of a Working Group based on the interests of each Member. This activity is also a reference in the preparation of the "Indonesia Sustainable Coffee Roadmap" document.



## J. Youth Barista Training in Kintamani, Bali

The Youth Barista in Kintamani Bali was held at Gunung Catur Coffee, Kintamani, Bali Province for 4 (four) days from 6 – 9 September 2021. This training was attended by 29 participants. The training was carried out by professionals from the Indonesia Coffee Academy (ICA) with materials on coffee cupping, manual brewing, and latte art. The training was attended by Ms. Ni Luh Made Wiratmi, Assistant Governor for the Economy and Development of the Bali Province, and Mr. Lanang Aryawan, Head of Plantation, Department of Agriculture and Food Security of the Bali Province. Through this activity, participants are expected to have awareness and interest of the younger generation in coffee-producing areas to continue cultivation and business activities in the coffee sector.



## K Kick-Off Meeting Indonesia Coffee Export Development Program and Field Visit to Central Aceh Regency, Aceh Province, and Karo Regency, North Sumatra Province

SCOPI and the International Islamic Trade Finance Corporation (ITFC) have signed a five-year contract for the “Indonesian Coffee Export Development Program” with the main objective of achieving a sustainable increase in coffee quality and quantity in Indonesia, through capacity building and promoting good and sustainable coffee cultivation practices. (Good Agricultural Practices - GAP) to coffee farmers. The framework of the 5-year work program includes capacity building in the coffee sector, implementation of MT development plans, MT business feasibility, and monitoring and evaluation activities.

In connection with these activities, SCOPI and ITFC in collaboration with the Regional Government of Central Aceh Regency - Aceh Province and Karo Regency Government - North Sumatra Province, held kick-off meetings successively held in Central Aceh Regency and Karo Regency on 13 and 18 October 2021 to mark the official start of this program. In a series of activities, SCOPI together with ITFC also conducted field visits in Aceh Tengah Regency and Karo Regency on 11-19 October 2021.





## L Demonstration Plot Indonesia Coffee Export Development Program in Central Aceh Regency, Aceh Province, and Karo Regency, North Sumatra Province

The demonstration plot is vital for training activities, it shows farmers how to boost coffee yields using various sustainable techniques and at the same time it promotes agricultural diversification. Besides, the demonstration plot will arrange the best learning situations.

SCOPI & ITFC team visiting demonstration plot site in 2 villages, which is Lepar Samura Village, Tigapanah District, Karo Regency, North Sumatra Province and in Umang Cucut Village, Bebesen District, Aceh Tengah Regency, Aceh Province.



## M Meeting Of SCOPI Members Working Group Establishment And Development Indonesia Sustainable Coffee Roadmap Document

SCOPI held a series of virtual meetings for the Establishment of a Working Group for SCOPI Members as a follow-up to the Indonesia Sustainable Coffee Roadmap Workshop (ISCRW) on 2-3 December 2021. Through this meeting, stakeholders in the coffee supply chain in Indonesia, especially SCOPI Members, provided input and proposals related to the preparation of the “Indonesia Sustainable Coffee Roadmap” document which covers the topics: (i) environmentally friendly, (ii) agroforestry, (iii) productivity and (iv) climate, and how the criteria for sustainable coffee in Indonesia can be linked to the CSRC document that is the reference at the global level. The result of this activity was the formation of 4 (four) SCOPI member Working Groups following the above topics along with the structure and program of each Working Group. In addition, at the end of December 2021, version 1.0 of the Indonesia Sustainable Coffee Roadmap has been compiled.





## N Coordination for the Preparation of the 7th UNDRR Site Visit Team in 2022, Bali Province

In connection with the implementation of the 7th Global Platform for Disaster Risk Reduction (GPDRR) in 2022 in Bali Province, UNDRR represented by the National Disaster Management Agency (BNPB) invited SCOPI to contribute to the implementation of the GPDRR international forum activities which will discuss developments and directions disaster risk reduction (DRR) strategy in the world. The location of SCOPI members, namely Kopi Gunung Catur, Subak Abian Tri Guna Karya, became one of the objectives of field trips for GPDRR participants. In preparation, SCOPI conducted a coordination and site survey on 19 – 24 October 2021.



## ©. Jakarta Coffee Week 2021

Jakarta Coffee Week (JACOWEEK) 2021 event was being held on 26-28 November 2021, located in Mall of Indonesia (MOI), Jakarta Utara. SCOPI's participate in JACOWEEK event by joining with Specialty Coffee Association of Indonesia (SCAI) booth. In JACOWEEK, SCOPI bring 2 products of coffee from Master Trainer from Jambi and Manggarai (Nusa Tenggara Timur). A few SCOPI members also participate in this event, which is Anomali Coffee, PT. ABCD School of Coffee, Toko Kopi Tuku, and PT. Berangan Ragam Rasa (BERAGAM).



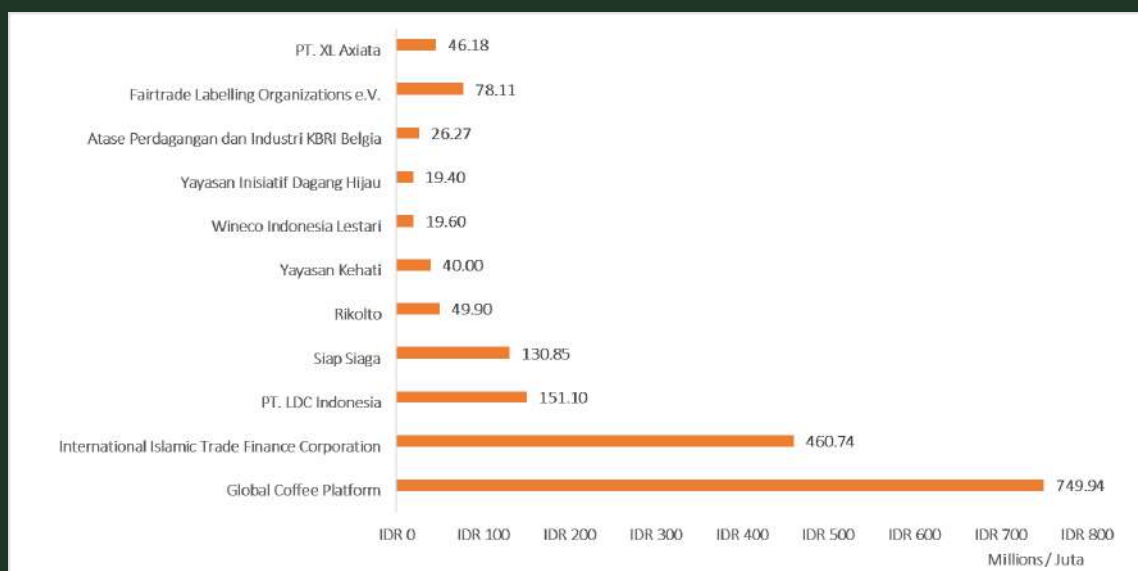
## P. Trial Sensory Tool (XL Axiata)

SCOPI together with PT. XL Axiata is collaborating in the development of IoT Solution products which has been carried out on 10 - 11 December 2021 at Tridaya Utama, Harjounccaran Village, Kec. Sumbermanjing Wetan, Malang Regency, East Java Province in December 2021, involving several master trainers and coffee farmers. This activity is a trial of fermentation and drying equipment to keep the green beans produced following market expectations and standards by setting a reminder on the tool if the results meet the criteria. The sensor device used will measure temperature, humidity, and measure the pH of the acidity where the coffee beans are fermented, then the data information will be sent to the farmer's cellphone in Live and Real-Time with an internet connection.

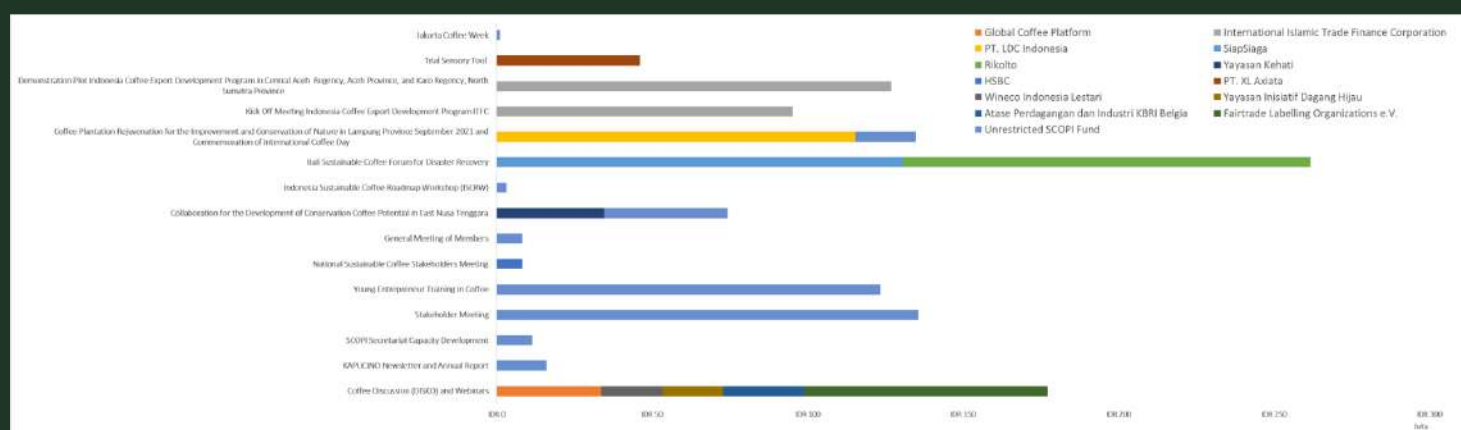


## VI. FUND ALLOCATION SUMMARY FOR 2021

The number of donors during 2021 is 11 donors with a nominal amount of IDR 1,772,089,982.40. Following are the details of the funds from each donor:



The allocation of funds from each donor is as follows:





## VII. SCOPI MEMBERS AND PARTNERS

NAME	JOIN DATE
GABUNGAN EKSPORTIR KOPI INDONESIA (GAEKI)	31 March 2015
KOPERASI MURBENG PUNTANG	31 March 2015
PT. ANOMALI COFFEE	31 March 2015
PT. MAYORA INDAH, TBK	31 March 2015
PT. NESTLÉ INDONESIA	31 March 2015
RIKOLTO	31 March 2015
SNV NETHERLANDS DEVELOPMENT ORGANISATION	31 March 2015
SUCAFINA	31 March 2015
YAYASAN INISIATIF DAGANG HIJAU (IDH)	31 March 2015
JACOBS DOUWE EGBERTS B.V. (JDE)	08 June 2015
PT. ANEKA COFFEE INDUSTRY	08 June 2015
PT. BERJAYA LANCAR TERUS (MY KOPI O!)	08 June 2015
PT. INDO CAFCO (ECOM)	08 June 2015
PT. NEDCOFFEE INDONESIA (SUCDEN COFFEE)	08 June 2015
YAYASAN SOLIDARIDAD NETWORK INDONESIA	08 June 2015
YAYASAN WWF-INDONESIA	08 June 2015
FAIRTRADE NETWORK OF ASIA & PACIFIC PRODUCERS	23 June 2015
HANNS R. NEUMANN STIFTUNG (HRNS)	23 June 2015
RAINFOREST ALLIANCE	23 June 2015
RE MARK ASIA / ASIA INSTITUTE OF KNOWLEDGE	23 June 2015
PT. JAVANERO INDONESIA ARTA	02 August 2015
KOPERASI MITRA MALABAR	20 May 2016
PT. ASAL JAYA	20 May 2016
PT. OLAM INDONESIA (OFI)	27 June 2016
CV. FRINSA AGROLESTARI	03 October 2016
LUTHERAN WORLD RELIEF (LWR)	03 October 2016
YAYASAN PEMBANGUNAN KESEJAHTERAAN	03 October 2016
MASYARAKAT (YAPKEMA) PAPUA	11 December 2017
PT. ABCD KOPI INDONESIA	15 May 2018
ENVERITAS	15 May 2018
PT. SENTRAL ARTA MAKMUR	15 May 2018
PT. SULOTCO JAYA ABADI	15 May 2018
WILDLIFE CONSERVATION SOCIETY - INDONESIA	15 May 2018
PT. ASURANSI SINAR MAS	25 May 2018
YAYASAN BITRA INDONESIA	25 May 2018
YAYASAN KEANEKARAGAMAN HAYATI INDONESIA	01 July 2020
PT. LDC TRADING INDONESIA	01 July 2020
PT. WILLINDO JAYA UTAMA	01 July 2020
RUMAH KOLABORASI (RUKO)	01 January 2021
PT. CIPTA KEMAS ALAMI (GRAINPRO)	01 January 2021

NAME	JOIN DATE
Koperasi Klasik Beans	01 January 2021
PT. Berangan Ragam Rasa (BERAGAM)	27 April 2021
PT. Karya Tetangga Tuku (Toko Kopi Tuku)	27 April 2021
PT. Wangsa Kopi Gayo	30 April 2021
UD. Maju Mandiri	01 March 2021
Subak Abian Tri Guna Karya	08 November 2021
Lingkar Temu Kabupaten Lestari	01 January 2022
MPIG Manggarai	01 January 2022
PT. Berindo Jaya	01 January 2022
PT. Pandawa Agri Indonesia	01 January 2022

## SCOPI PARTNERS GOVERNMENT

COORDINATING MINISTRY FOR ECONOMIC AFFAIRS OF THE REPUBLIC OF INDONESIA  
 MINISTRY OF AGRICULTURE OF THE REPUBLIC OF INDONESIA  
 MINISTRY OF COOPERATIVES AND SMALL AND MEDIUM ENTERPRISES OF THE REPUBLIC OF INDONESIA  
 MINISTRY OF TRADE OF THE REPUBLIC OF INDONESIA  
 MINISTRY OF INDUSTRY OF THE REPUBLIC OF INDONESIA  
 MINISTRY OF FORESTRY AND ENVIRONMENT OF THE REPUBLIC OF INDONESIA  
 MINISTRY OF LAW AND HUMAN RIGHTS OF THE REPUBLIC OF INDONESIA  
 MINISTRY OF INTEREST OF THE REPUBLIC OF INDONESIA  
 MINISTRY OF TOURISM AND CREATIVE ECONOMY OF THE REPUBLIC OF INDONESIA  
 LAMPUNG PROVINCE GOVERNMENT - LAMPUNG PROVINCE PLANTATION OFFICE  
 WEST JAVA PROVINCE GOVERNMENT - PLANTATION OFFICE  
 SOUTH SUMATRA PROVINCE GOVERNMENT – PLANTATION OFFICE  
 JAMBI PROVINCE GOVERNMENT – PLANTATION OFFICE  
 REGIONAL GOVERNMENT OF ENREKANG REGENCY – AGRICULTURE OFFICE  
 REGIONAL GOVERNMENT OF TORAJA UTARA REGENCY – AGRICULTURE OFFICE  
 REGIONAL GOVERNMENT OF CENTRAL ACEH REGENCY – AGRICULTURAL OFFICE  
 REGIONAL GOVERNMENT OF LAHAT - AGRICULTURE OFFICE  
 REGIONAL GOVERNMENT OF DAIRI – AGRICULTURE OFFICE  
 REGIONAL GOVERNMENT OF BANDUNG REGENCY – DEPARTMENT OF AGRICULTURE, HORTICULTURE AND PLANTATIONS  
 REGIONAL GOVERNMENT OF WAY KANAN – PLANTATION OFFICE  
 REGIONAL GOVERNMENT OF BOGOR REGENCY – FOOD CROP, HORTICULTURE, AND PLANTATION DEPARTMENT  
 REGIONAL GOVERNMENT OF BANYUWANGI – AGRICULTURE OFFICE

REGIONAL GOVERNMENT OF WEST MANGGARAI – FOOD CROP, HORTICULTURE, AND  
PLANTATION DEPARTMENT  
REGIONAL GOVERNMENT OF MANGGARAI  
REGIONAL GOVERNMENT OF MANGGARAI TIMUR  
REGIONAL GOVERNMENT OF BONDOWOSO  
REGIONAL GOVERNMENT OF WEST LAMPUNG  
REGIONAL GOVERNMENT OF MERANGIN – DEVELOPMENT, INNOVATION AND TECHNOLOGY  
REGIONAL GOVERNMENT OF KARO – AGRICULTURE OFFICE  
REGIONAL GOVERNMENT OF MALANG - AGRICULTURE AND PLANTATION SERVICES  
REGIONAL GOVERNMENT OF PANIAI – LIVESTOCK AND PLANTATION SERVICES  
REGIONAL GOVERNMENT OF SIMALUNGUN – AGRICULTURE OFFICE  
REGIONAL GOVERNMENT OF DEIYAI – AGRICULTURE OFFICE  
REGIONAL GOVERNMENT OF DOGIYAI – AGRICULTURE OFFICE  
REGIONAL GOVERNMENT OF BULUKUMBA – AGRICULTURE OFFICE  
REGIONAL GOVERNMENT OF NORTH LOMBOK – AGRICULTURE OFFICE  
REGIONAL GOVERNMENT OF HUMBANG HASUNDUTAN – AGRICULTURE OFFICE  
REGIONAL GOVERNMENT OF SUNGAI PENUH – FOOD CROP, HORTICULTURE, AND  
PLANTATION SERVICES  
EMBASSY OF THE REPUBLIC OF INDONESIA IN FINLAND  
EMBASSY OF THE REPUBLIC OF INDONESIA IN SINGAPORE  
EMBASSY OF THE REPUBLIC OF INDONESIA IN GERMANY  
EMBASSY OF THE REPUBLIC OF INDONESIA IN BELGIUM

## SCOPI PARTNERS NON-GOVERNMENT

INTERNATIONAL ISLAMIC TRADE FINANCE CORPORATION (ITFC)  
INSTITUT PERTANIAN BOGOR (IPB)  
PISAGRO  
SYDNEY UNIVERSITY  
HARUKA EDU  
BANK INDONESIA  
ACICIS  
UNIVERSITAS BINA NUSANTARA (BINUS)  
ICCRI  
MAJALENGKA UNIVERSITY  
POLITEKNIK PEMBANGUNAN PERTANIAN MEDAN



## VIII. SCOPI DONORS

### DONORS

GLOBAL COFFEE PLATFORM (GCP)  
INTERNATIONAL ISLAMIC TRADE FINANCE CORPORATION (ITFC)  
PROFILEPRINT  
PT. LDC INDONESIA  
SIAP SIAGA  
RIKOLTO  
YAYASAN KEHATI  
WINECO INDONESIA LESTARI (WINROCK)  
YAYASAN INISIATIF DAGANG HIJAU  
KEDUTAAN BRUSSELS  
FAIRTRADE LABELLING ORGANIZATIONS E.V.  
PT. XL AXIATA



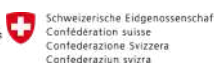
# Donors



# Partners



Kingdom of the Netherlands



# Members

